

LOC I-MIV <b>110.9</b>	APP CRS <b>100°</b>	Rwy Idg TDZE Apt Elev	<b>6003</b> <b>74</b> <b>85</b>
---------------------------	------------------------	-----------------------------	---------------------------------------

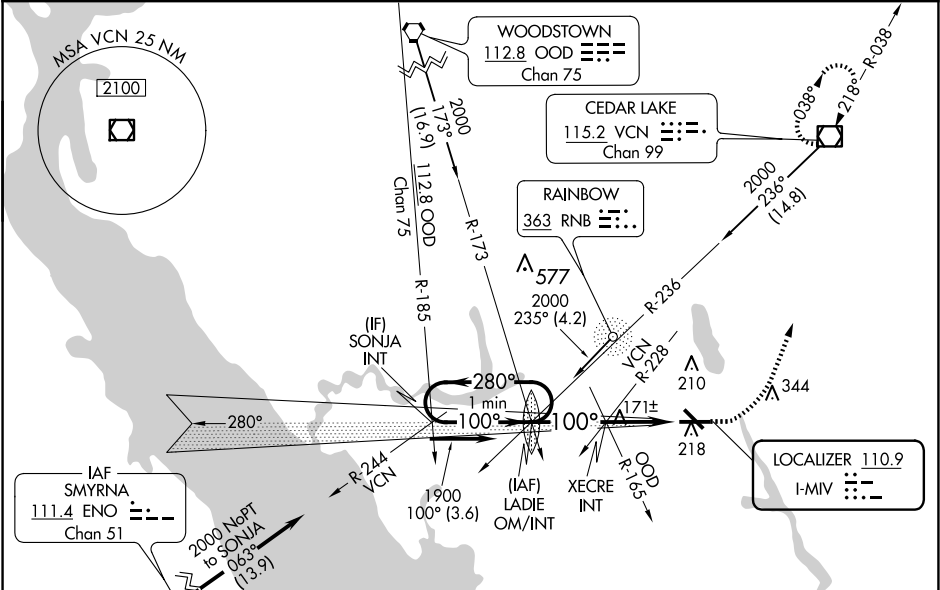
ILS or LOC RWY 10  
MILLVILLE MUNI (MIV)

**⚠** Inoperative table does not apply. Rwy 10 helicopter visibility reduction below ¾ SM NA. When local altimeter setting not received, use Atlantic City altimeter setting: increase DA to 407 feet; increase all MDAs 60 feet and visibility Cat B ¼ SM and Cats C and D ½ SM. Autopilot coupled approach NA below 300 MSL.

**MALSR**

**MISSED APPROACH:** Climb to 550 then climbing left turn to 2000 direct VCN VOR/DME and hold.

ASOS <b>119.6</b>	ATLANTIC CITY APP CON <b>124.6 327.125</b>	UNICOM <b>123.0 (CTAF)</b>
----------------------	---	-------------------------------



<div>One Minute Holding Pattern</div> <div><div><div>2000</div><div>← 280°</div><div>100° →</div></div><div><div>GS 3.00°</div><div>TCH 52</div></div></div> <div><div>LADIE OM/INT</div><div>1865</div><div>1900</div><div>100°</div><div>980</div><div>2.7 NM</div><div>2.7 NM</div></div> <div><div>550</div><div>2000</div><div>VCN</div></div>					<div>ELEV 85</div> <div>TDZE 74</div>																																				
<table><tr><td>CATEGORY</td><td>A</td><td>B</td><td>C</td><td>D</td></tr><tr><td>S-ILS 10</td><td colspan="2">347-1</td><td colspan="2">273 (300-1)</td></tr><tr><td>S-LOC 10</td><td>980-1¼</td><td>906 (900-1¼)</td><td>980-2½</td><td>906 (900-2½)</td></tr><tr><td>CIRCLING</td><td>980-1¼</td><td>895 (900-1¼)</td><td>980-2¾ 895 (900-2¾)</td><td>980-3 895 (900-3)</td></tr><tr><td colspan="5">XECRE FIX MINIMUMS (DUAL VOR RECEIVERS REQUIRED)</td></tr><tr><td>S-LOC 10</td><td colspan="2">440-1</td><td colspan="2">366 (400-1)</td></tr><tr><td>CIRCLING</td><td>520-1 435 (500-1)</td><td>580-1 495 (500-1)</td><td>660-1½ 575 (600-1½)</td><td>660-2 575 (600-2)</td></tr></table>					CATEGORY	A	B	C	D	S-ILS 10	347-1		273 (300-1)		S-LOC 10	980-1¼	906 (900-1¼)	980-2½	906 (900-2½)	CIRCLING	980-1¼	895 (900-1¼)	980-2¾ 895 (900-2¾)	980-3 895 (900-3)	XECRE FIX MINIMUMS (DUAL VOR RECEIVERS REQUIRED)					S-LOC 10	440-1		366 (400-1)		CIRCLING	520-1 435 (500-1)	580-1 495 (500-1)	660-1½ 575 (600-1½)	660-2 575 (600-2)	<div><div><div><div><div>128</div><div>5088 X 150</div><div>32</div><div>28</div></div><div><div>0</div><div>6003 X 150</div><div>100°</div></div></div><div><div>AS</div><div>0</div><div>100°</div></div></div></div>	
CATEGORY	A	B	C	D																																					
S-ILS 10	347-1		273 (300-1)																																						
S-LOC 10	980-1¼	906 (900-1¼)	980-2½	906 (900-2½)																																					
CIRCLING	980-1¼	895 (900-1¼)	980-2¾ 895 (900-2¾)	980-3 895 (900-3)																																					
XECRE FIX MINIMUMS (DUAL VOR RECEIVERS REQUIRED)																																									
S-LOC 10	440-1		366 (400-1)																																						
CIRCLING	520-1 435 (500-1)	580-1 495 (500-1)	660-1½ 575 (600-1½)	660-2 575 (600-2)																																					
<div>MIRL Rwy 10-28 and 14-32</div> <div>FAF to MAP 5.4 NM</div> <table><tr><td>Knots</td><td>60</td><td>90</td><td>120</td><td>150</td><td>180</td></tr><tr><td>Min:Sec</td><td>5:24</td><td>3:36</td><td>2:42</td><td>2:10</td><td>1:48</td></tr></table>					Knots	60	90	120	150	180	Min:Sec	5:24	3:36	2:42	2:10	1:48																									
Knots	60	90	120	150	180																																				
Min:Sec	5:24	3:36	2:42	2:10	1:48																																				