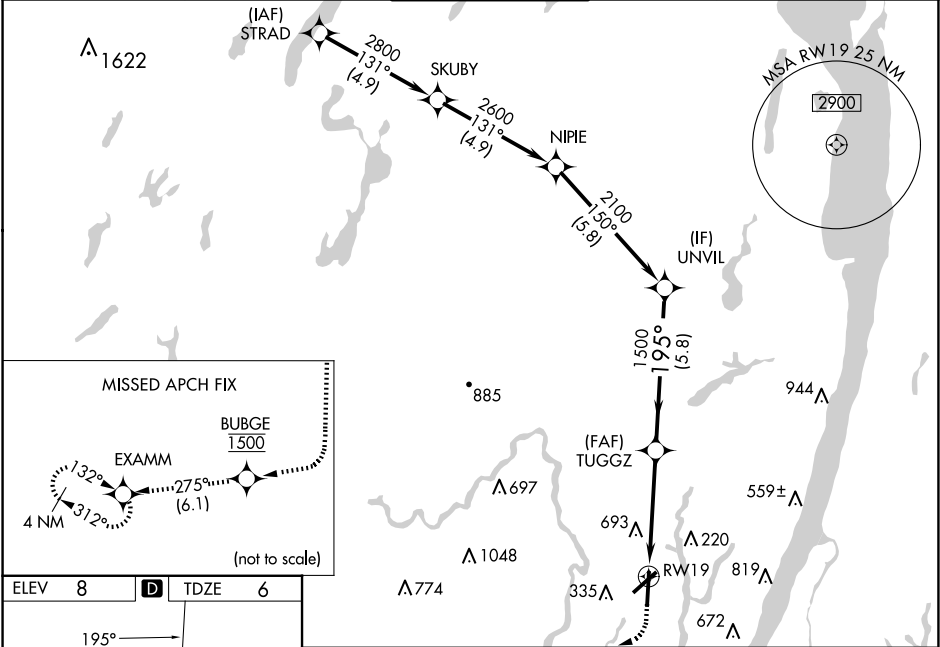


WAAS CH 97736 W19A	APP CRS 195°	Rwy Idg TDZE Apt Elev	6230 6 8
--	------------------------	-----------------------------	-------------------------------------

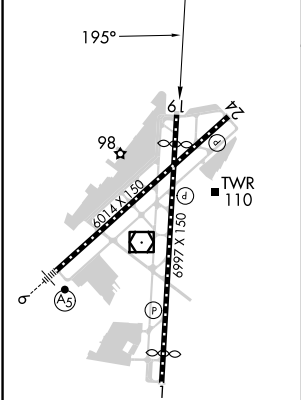
RNAV (GPS) Y RWY 19

TETERBORO (TEB)

RNP APCH - GPS. RADAR required.		MISSED APPROACH: Climb to 500 then climbing right turn direct BUBGE, cross BUBGE at 1500, then climb to 3000 on track 275° to EXAMM and hold, continue climb-in-hold to 3000.			
<div><div></div><div></div></div> <div>Circling NA for Cats B, C, D northwest of Rwy 6-19. For uncompensated Baro-VNAV systems, LNAV/VNAV NA below -13°C or above 54°C.</div>					
D-ATIS 114.2 132.85	NEWARK APP CON 127.6 379.9	TETERBORO TOWER 119.5	GND CON 121.9	CLNC DEL 128.05	CPDLC



ELEV 8	D	TDZE 6
--------	----------	--------



TDZ/CL Rws 6 and 19
REIL Rws 1, 6, 19 and 24
HIRL Rws 1-19 and 6-24

500		BUBGE		3000		EXAMM		UNVIL	
		1500		tr 275°					
		TUGGZ		1500		195°		2100	
		2.8 NM to RW19		1500		1500		GP 3.00° TCH 54	
		2.8 NM		1.7 NM		5.8 NM			
CATEGORY	A		B		C		D		
LPV DA			241-3/4		235 (300-3/4)				
LNAV/VNAV DA			1096-4		1090 (1100-4)				
LNAV MDA	960-1 1/4 954 (1000-1 1/4)		960-1 1/2 954 (1000-1 1/2)		960-3		954 (1000-3)		
CIRCLING	960-1 1/4 952 (1000-1 1/4)		960-1 1/2 952 (1000-1 1/2)		960-3		1040-3 1032 (1100-3)		