

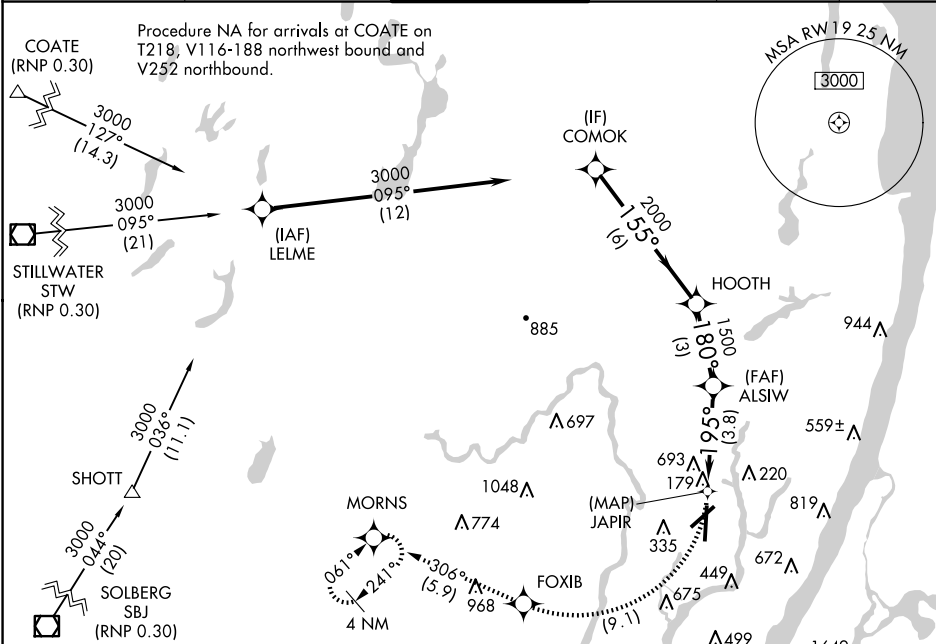
APP CRS	Rwy Idg	6230
195°	TDZE	6
	Apt Elev	8

RNAV (RNP) Z RWY 19

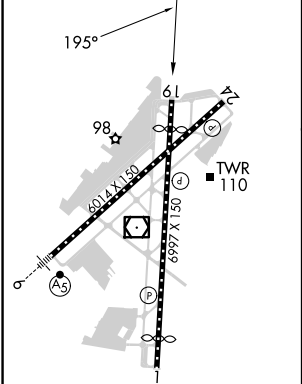
TETERBORO (TEB)

<div><div>▼</div><div>NA</div></div>	For uncompensated Baro-VNAV systems, procedure NA below -13°C (8°F) or above 54°C (130°F). RF required. GPS required. Missed approach requires RNP less than 1.0.	MISSED APPROACH: Climb to 1500 via right turn to FOXIB, then climb to 3000 on track 306° to MORNNS and hold.
--------------------------------------	---	--

D-ATIS	NEWARK APP CON	TETERBORO TOWER	GND CON	CLNC DEL	CPDLC
114.2 132.85	127.6 379.9	119.5	121.9	128.05	



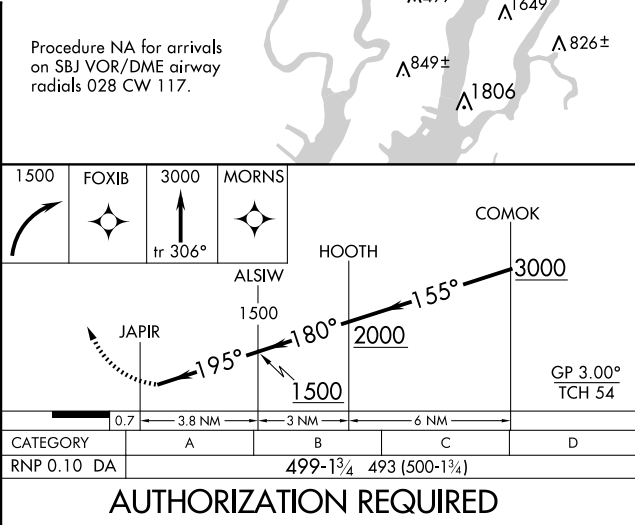
ELEV	8	TDZE	6
------	---	------	---



TDZ/CL Rwy 6 and 19

REIL Rwy 1, 6, 19 and 24

HIRL Rwy 1-19 and 6-24



NE-2, 07 AUG 2025 to 04 SEP 2025

NE-2, 07 AUG 2025 to 04 SEP 2025