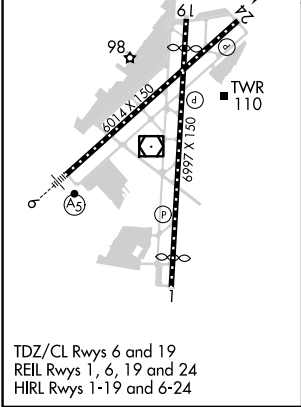
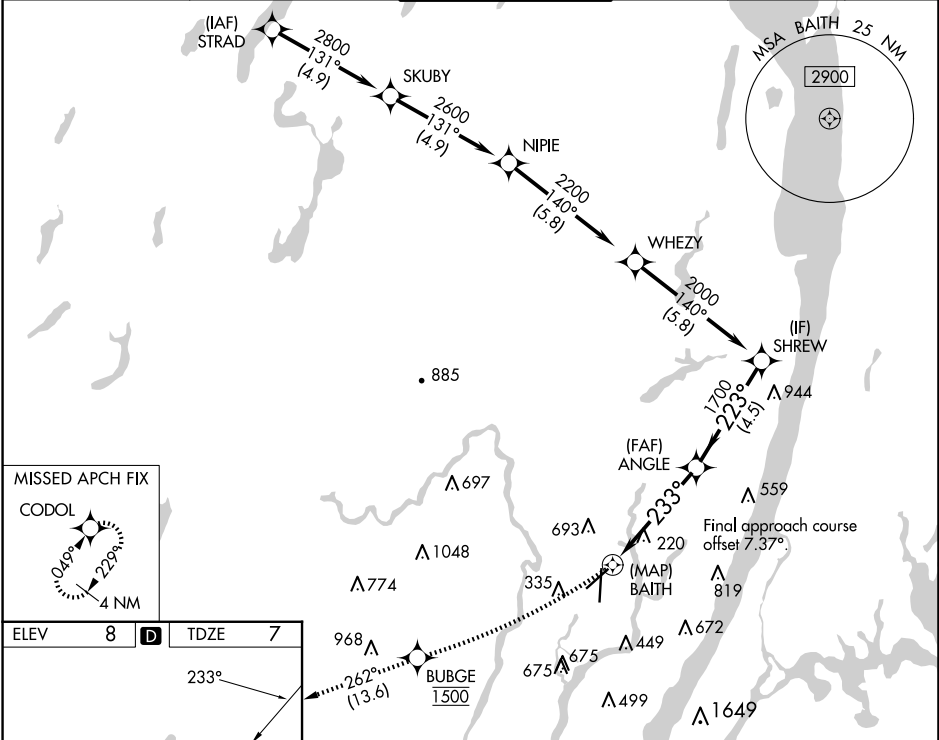


APP CRS	Rwy Idg	6014
233°	TDZE	7
	Apt Elev	8

RNAV (GPS) RWY 24

TETERBORO (TEB)

RNP APCH. RADAR required.		MISSED APPROACH: Climbing right turn direct BUBGE, cross BUBGE at 1500 then climb to 2000 on track 262° to CODOL and hold.			
<div><div></div><div></div></div> <div>Circling NA for Cats B, C, D northwest of Rwy 6-19. Rwy 24 helicopter visibility reduction below 1 NA.</div>		D-ATIS	NEWARK APP CON	TETERBORO TOWER	GND CON
114.2 132.85		127.6 379.9	119.5		121.9
					CLNC DEL
					128.05
					CPDLC



ELEV 8 D TDZE 7		BUBGE 2000 tr 262° CODOL	
233°		SHREW 2000	
98 61 601 X 150 601 X 150 6997 X 150		ANGLE 223° 1700	
TWR 110		BAITH 233°	
TDZ/CL Rws 6 and 19		CATEGORY A B C D	
REIL Rws 1, 6, 19 and 24		LNAV MDA 580-1 573 (600-1) 580-1½ 573 (600-1½)	
HIRL Rws 1-19 and 6-24		CIRCLING 760-1 752 (800-1) 820-2½ 1040-3 812 (900-2½) 1032 (1100-3)	

NE-2, 07 AUG 2025 to 04 SEP 2025

NE-2, 07 AUG 2025 to 04 SEP 2025