

LOC/DME I-TJL	APP CRS	Rwy Idg	6230
110.15	195°	TDZE	6
Chan 38 (Y)		Apt Elev	8

ILS or LOC RWY 19

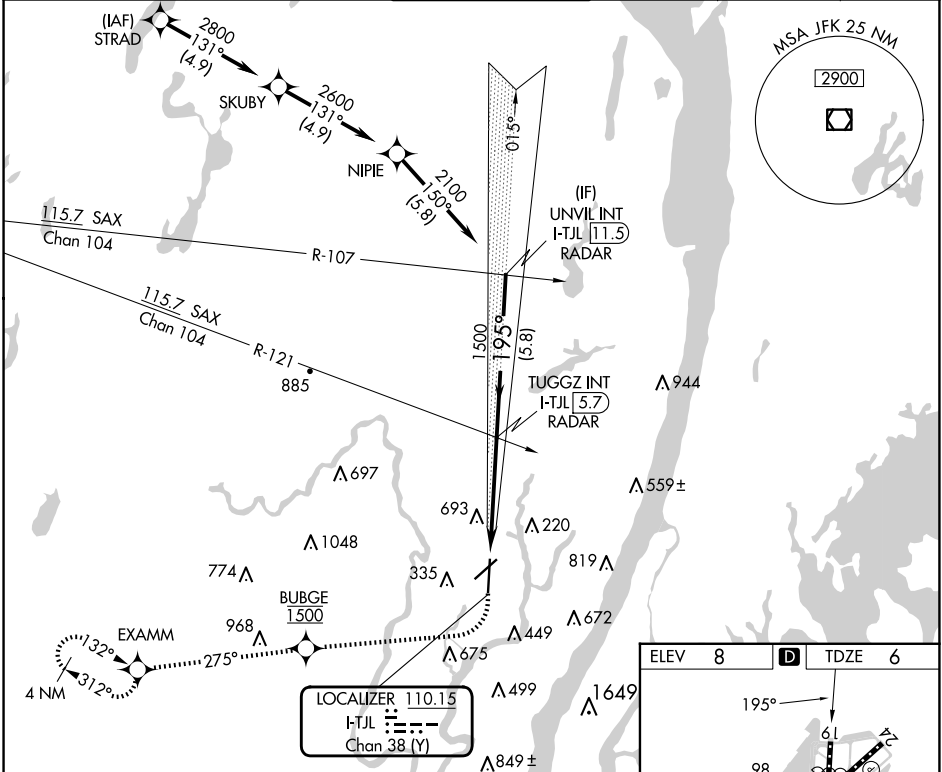
TETERBORO (TEB)

RNP APCH - GPS. RADAR required.

Circling NA for Cats B, C, D northwest of Rwy 6-19.

MISSED APPROACH: Climb to 500 then climbing right turn direct BUBGE, cross BUBGE at 1500, then climb to 3000 on track 275° to EXAMM and hold, continue climb-in-hold to 3000.

D-ATIS	NEWARK APP CON	TETERBORO TOWER	GND CON	CLNC DEL	CPDLC
114.2 132.85	127.6 379.9	119.5	121.9	128.05	



500				BUBGE	3000		tr 275°		EXAMM	UNVIL INT I-TJL <u>11.5</u> RADAR
				1500						
<div><div>I-TJL 2.9</div><div>TUGGZ INT I-TJL <u>5.7</u> RADAR</div><div>1500</div><div>195°</div><div>2100</div><div>1500</div><div>GS 3.00° TCH 54</div></div>										
CATEGORY	A		B		C		D			
S-ILS 19	241- <sup>3</sup> / <sub>4</sub> 235 (300- <sup>3</sup> / <sub>4</sub> )									
S-LOC 19	640-1 634 (700-1)					640-1 <sup>3</sup> / <sub>4</sub> 634 (700-1 <sup>3</sup> / <sub>4</sub> )				
CIRCLING	760-1 752 (800-1)					820-2 <sup>1</sup> / <sub>2</sub> 812 (900-2 <sup>1</sup> / <sub>2</sub> )		1040-3 1032 (1100-3)		

ELEV 8

D

TDZE 6

TDZ/CL Rwy 6 and 19

REIL Rwy 1, 6, 19 and 24

HIRL Rwy 1-19 and 6-24

FAF to MAP 4.5 NM

Knots	60	90	120	150	180
Min:Sec	4:30	3:00	2:15	1:48	1:30

NE-2, 07 AUG 2025 to 04 SEP 2025

NE-2, 07 AUG 2025 to 04 SEP 2025