

HOQUIAM, WASHINGTON

AL-889 (FAA)

24305

WAAS CH 82015 W06A	APP CRS 061°	Rwy Idg 5000 TDZE 18 Apt Elev 18
----------------------------------------	------------------------	-------------------------------------------------------------

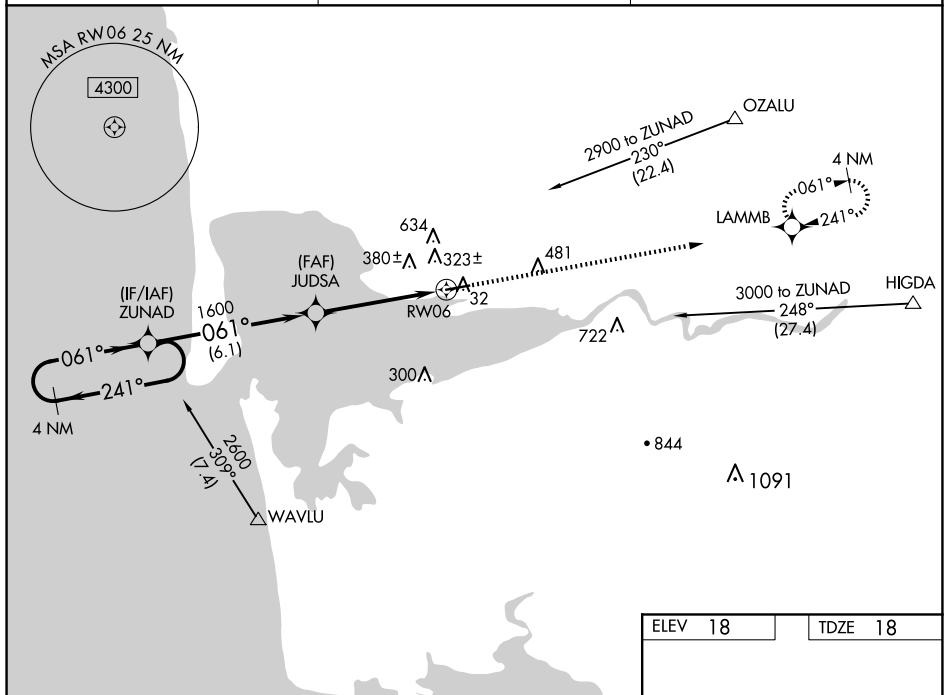
RNAV (GPS) RWY 6
BOWERMAN FLD (HQM)

RNP APCH.

T Circling NA northwest of Rwy 6-24. For uncompensated Baro-VNAV systems, LNAV/VNAV NA below -15°C (5°F) or above 48°C (118°F). Rwy 6 helicopter visibility reduction below 1 SM NA. When local altimeter setting not received, procedure NA.

MISSED APPROACH: Climb to 2900 direct LAMMB and hold.

ASOS 135.775	SEATTLE CENTER 128.3 269.0	UNICOM 122.7 (CTAF) 0
------------------------	--------------------------------------	---------------------------------



NW-1, 07 AUG 2025 to 04 SEP 2025

NW-1, 07 AUG 2025 to 04 SEP 2025

4 NM Holding Pattern

VGS and RNAV glidepath not coincident (VGS Angle 3.00/TCH 40).

ZUNAD

JUDSA

2600

241°

061°

061°

1600

1600

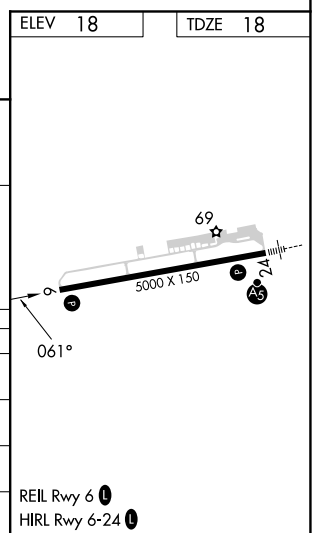
GP 3.00°
TCH 52

RW06

2900

LAMMB

		6.1 NM		4.7 NM			
CATEGORY	A	B		C		D	
LPV DA	308-1 290 (300-1)						
LNAV/VNAV DA	758-2½ 740 (800-2½)						
LNAV MDA	620-1	602 (700-1)		620-1¾ 602 (700-1¾)		620-2 602 (700-2)	
CIRCLING	620-1	602 (700-1)		800-2¼ 782 (800-2¼)		860-2¾ 842 (900-2¾)	



HOQUIAM, WASHINGTON
Amdt 1C 07OCT21

46°58'N-123°56'W

BOWERMAN FLD (HQM)

RNAV (GPS) RWY 6