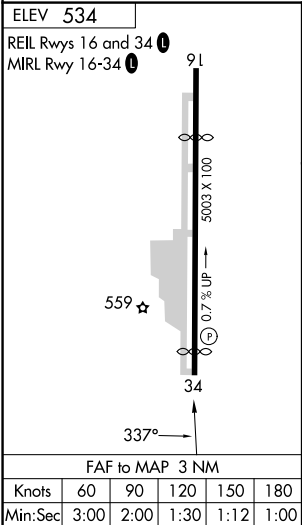
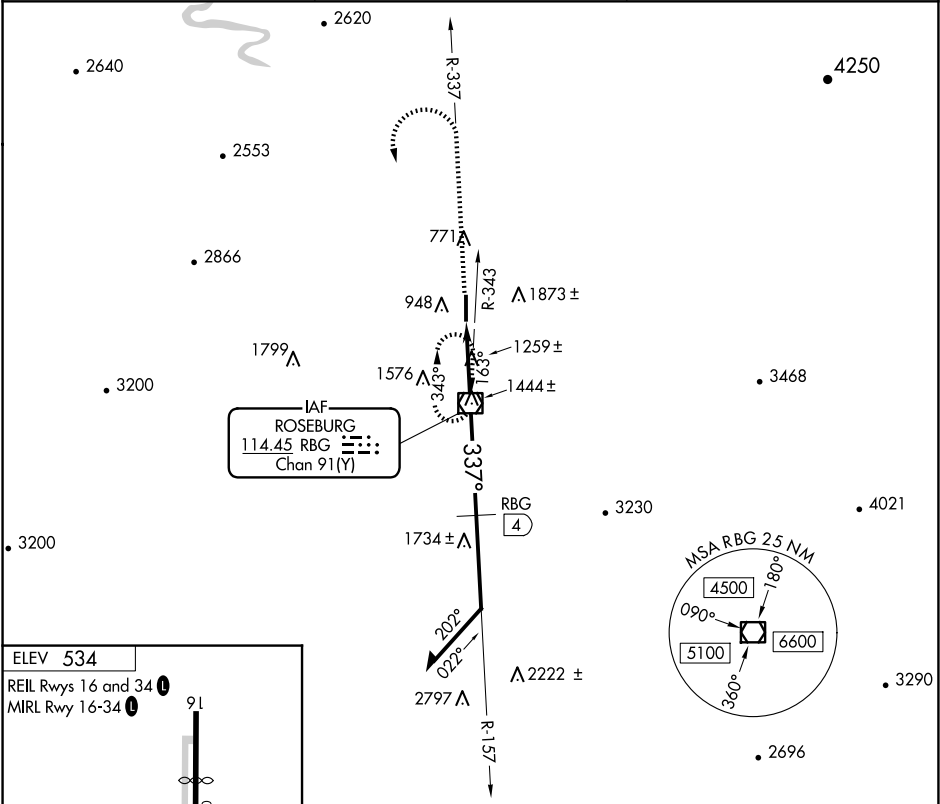


VOR/DME RBG 114.45 Chan 91(Y)	APP CRS 337°	Rwy Ldg TDZE Apt Elev 534	N/A N/A 534
---	------------------------	---	--

VOR-A
ROSEBURG RGNL (RBG)

<div><div></div><div>NA</div></div> <div>Circling not authorized east of Rwy 16-34. Procedure NA at night. Rwy 34 helicopter visibility reduction below 1 SM NA.</div>	MISSED APPROACH: Climb to 4000 on RBG VOR/DME R-337 within 1.5 NM; then climbing left turn to 5000 direct RBG VOR/DME and hold.
--	---

ASOS 135.475	SEATTLE CENTER 127.55 239.0	UNICOM 122.8 (CTAF)
------------------------	---------------------------------------	-------------------------------



4000	5000	RBG	RBG VOR/DME	157°	Remain within 10 NM	5000
RBG R-337			RBG 4	337°		
2800 if DME received.		3 NM	4 NM	3800	3800	
CATEGORY	A	B	C	D		
CIRCLING	2600-1¼ 2066 (2100-1¼)	2600-1½ 2066 (2100-1½)	2600-3	2066 (2100-3)		
DME MINIMUMS						
CIRCLING	1740-1¼ 1206 (1300-1¼)	1740-1½ 1206 (1300-1½)	2020-3 1486 (1500-3)	2100-3 1566 (1600-3)		

NW-1, 07 AUG 2025 to 04 SEP 2025

NW-1, 07 AUG 2025 to 04 SEP 2025