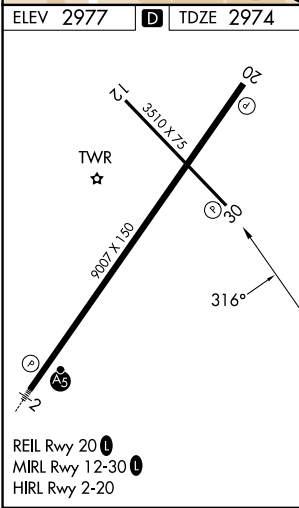
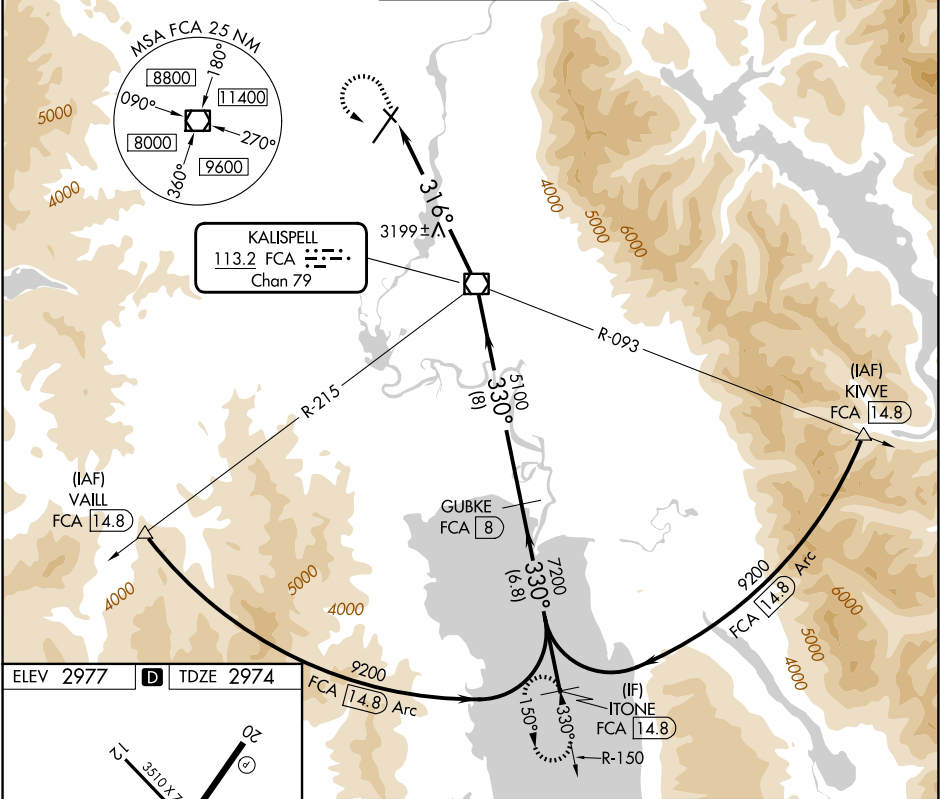


VOR/DME FCA	APP CRS	Rwy Ldg TDZE	3510
113.2	316°	2974	
Chan 79		Apt Elev	2977

VOR/DME RWY 30  
GLACIER PARK INTL (GPI)

<div><div><div></div><div></div></div><div><div></div><div></div></div></div> <div>Rwy 30 helicopter visibility reduction below ¾ SM NA.</div>	MISSED APPROACH: Climb to 4000 then climbing left turn to 9300 via heading 130° and FCA VOR/DME R-150 to ITONE/14.8 DME and hold, continue climb-in-hold to 9300.
--	---

ATIS 132.625	SALT LAKE CENTER 127.075 244.875	GLACIER TOWER★ 124.55 (CTAF) 0	GND CON 121.6	UNICOM 122.95
-----------------	-------------------------------------	-----------------------------------	------------------	------------------



4000	9300	FCA R-150	ITONE FCA 14.8	Descent angles NA.	ITONE FCA 14.8
↑	hdg 130°				
		FCA 6.5	FCA VOR/DME	7200	9200
		316°	5100	330°	
		6.5 NM	8 NM	6.8 NM	
CATEGORY	A	B	C	D	
S-30	3480-1	506 (600-1)	3480-1½	506 (600-1½)	
CIRCLING	3520-1	3580-1	3680-2	3760-2½	
	543 (600-1)	603 (700-1)	703 (800-2)	783 (800-2½)	

NW-1, 07 AUG 2025 to 04 SEP 2025

NW-1, 07 AUG 2025 to 04 SEP 2025