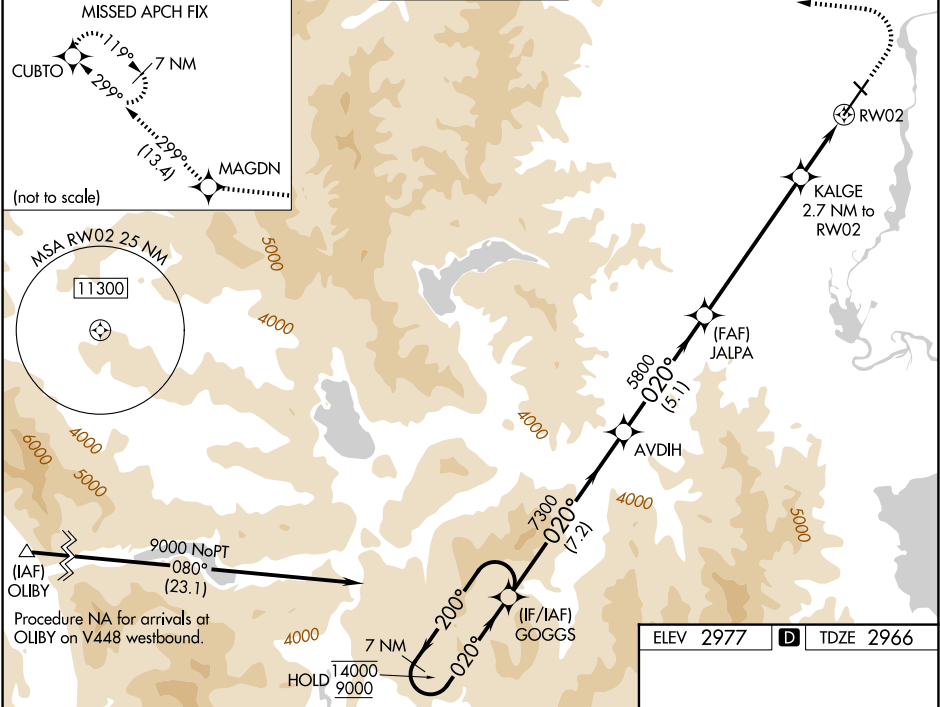


WAAS CH 70799 W02A	APP CRS 020°	Rwy Ldg TDZE Apt Elev 9007 2966 2977
--	------------------------	--

RNAV (GPS) Z RWY 2
GLACIER PARK INTL (GPI)

RNP APCH - GPS. ▼ For uncompensated Baro-VNAV systems, LNAV/VNAV NA below -24°C or above 54°C. For inop ALS, increase LNAV/VNAV all Cats visibility, and LNAV Cats C and D visibility to 1½ SM. ▲ -14°C		MALSR AS	MISSED APPROACH: (Do not exceed 185K until CUBTO) Climb to 4200 then climbing left turn 9200 direct MAGDN and on track 299° to CUBTO and hold, continue climb-in-hold to 9200.
---	--	-------------	--

ATIS 132.625	SALT LAKE CENTER 127.075 244.875	GLACIER TOWER ★ 124.55 (CTAF) 0	GND CON 121.6	UNICOM 122.95
------------------------	--	---	-------------------------	-------------------------



7 NM Holding Pattern		GOGGS	AVDIH	JALPA	KALGE	RW02
14000 ← 200°		9000 → 020°	7300	5800	3880	
GP 3.00°		TCH 51				
7.2 NM		5.1 NM	6 NM	1.4 NM	1.3 NM	
CATEGORY	A	B	C	D		
LPV DA	3166-½		200 (200-½)			
LNAV/VNAV DA	3468-1		502 (500-1)			
LNAV MDA	3440-½		474 (500-½)		3440-1	474 (500-1)
CIRCLING	3480-1		3580-1		3680-2	3760-2 ½
	503 (600-1)		603 (700-1)		703 (800-2)	783 (800-2 ½)

