

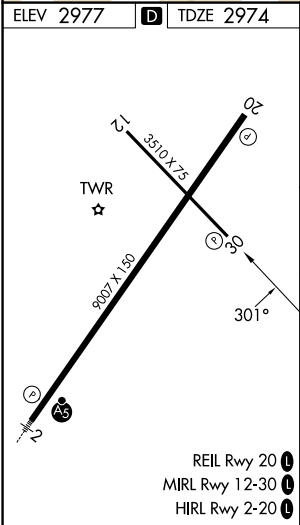
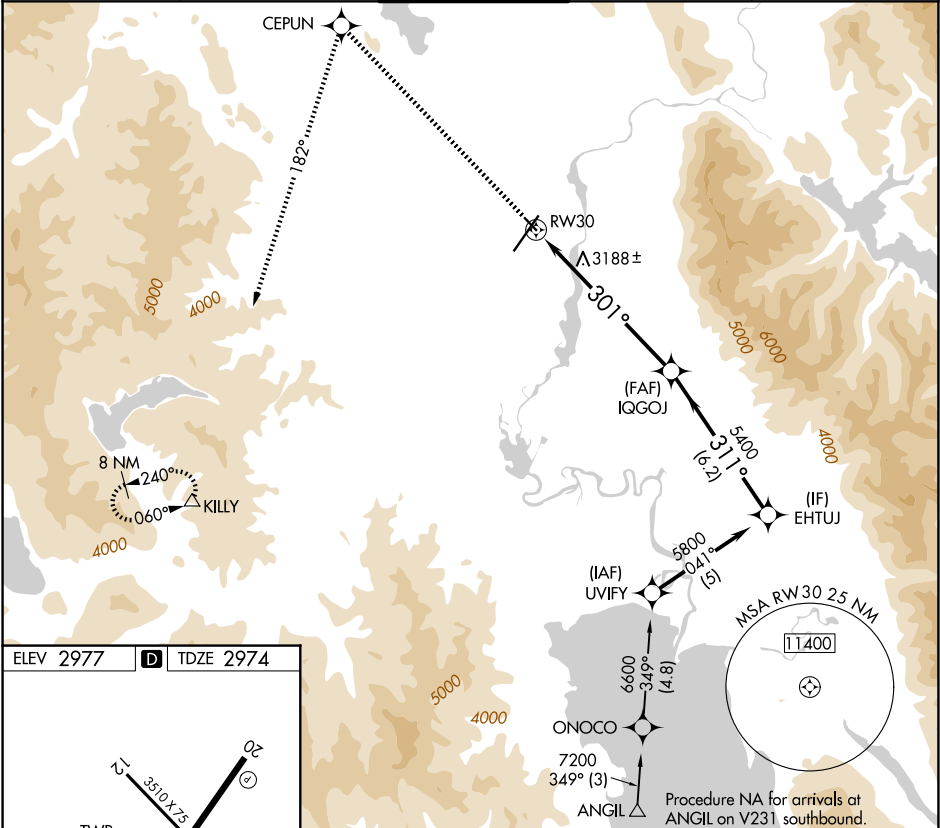
APP CRS	Rwy Ldg	3510
301°	TDZE	2974
	Apt Elev	2977

RNAV (GPS) RWY 30
GLACIER PARK INTL (GPI)

RNP APCH - GPS.	
	Rwy 30 helicopter visibility reduction below 3/4 SM NA.
	-14°C

MISSED APPROACH: Climb to 12000 direct CEPUN and left turn via track 182° to KILLY and hold, continue climb-in-hold to 12000.

ATIS 132.625	SALT LAKE CENTER 127.075 244.875	GLACIER TOWER★ 124.55 (CTAF) 0	GND CON 121.6	UNICOM 122.95
-----------------	-------------------------------------	-----------------------------------	------------------	------------------



12000	CEPUN	KILLY	VGS and descent angles not coincident (VGS Angle 3.50/TCH 26).		EHTUJ
			IQGOJ	5800	
			5400	311°	Procedure Turn NA
7 NM		6.2 NM			
CATEGORY	A	B	C	D	
LNAV MDA	3500-1	526 (600-1)	3500-1½	526 (600-1½)	
CIRCLING	3520-1 543 (600-1)	3580-1 603 (700-1)	3680-2 703 (800-2)	3760-2½ 783 (800-2½)	

NW-1, 07 AUG 2025 to 04 SEP 2025

NW-1, 07 AUG 2025 to 04 SEP 2025