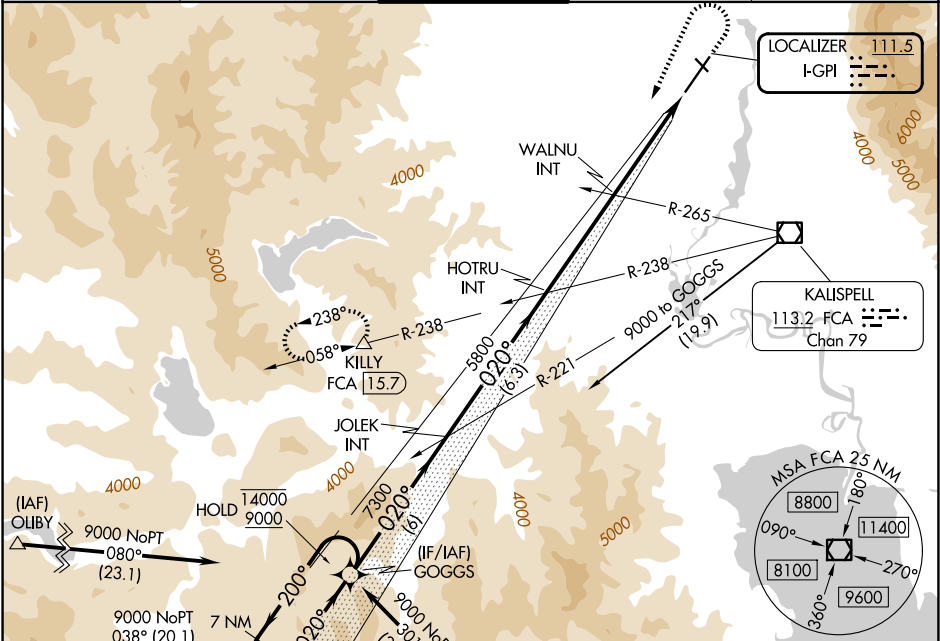


LOC I-GPI <b>111.5</b>	APP CRS <b>020°</b>	Rwy Ldg TDZE Apt Elev <b>9007</b> <b>2966</b> <b>2977</b>
---------------------------	------------------------	--

ILS or LOC RWY 2  
GLACIER PARK INTL (GPI)

DME required. RNAV 1-GPS or RADAR required for procedure entry.		MALSR	MISSED APPROACH: Climb to 4100 then climbing left turn to 12000 on heading 190° and FCA VOR/DME R-238 to KILLY/15.7 DME and hold, continue climb-in-hold to 12000.	
Inop table does not apply to S-LOC 2 Cats C/D.				
ATIS <b>132.625</b>	SALT LAKE CENTER <b>127.075 244.875</b>	GLACIER TOWER★ <b>124.55 (CTAF)</b>	GND CON <b>121.6</b>	UNICOM <b>122.95</b>



7 NM Holding Pattern		GOGGS		JOLEK INT		HOTRU INT		WALNU INT		KILLY			
14000 ← 200°		9000 → 020°		020°		020°		020°		020°			
GS 3.00°		TCH 51		5800		5800		5800		5800			
6 NM		6.3 NM		4.3 NM		4.5 NM							
CATEGORY	A		B		C		D						
S-ILS 2			3166-1/2		200 (200-1/2)								
S-LOC 2	4440-3/4 1474 (1500-3/4)		4440-1 1474 (1500-1)		4440-3		1474 (1500-3)						
CIRCLING	4440-1 1/4 1463 (1500-1 1/4)		4440-1 1/2 1463 (1500-1 1/2)		4440-3		1463 (1500-3)						
WALNU FIX MINIMUMS (DUAL VOR RECEIVERS REQUIRED)													
S-LOC 2	3520-1/2		554 (600-1/2)		3520-1 1/8		554 (600-1 1/8)						
CIRCLING	3520-1 543 (600-1)		3580-1 603 (700-1)		3680-2 703 (800-2)		3760-2 1/2 783 (800-2 1/2)						

