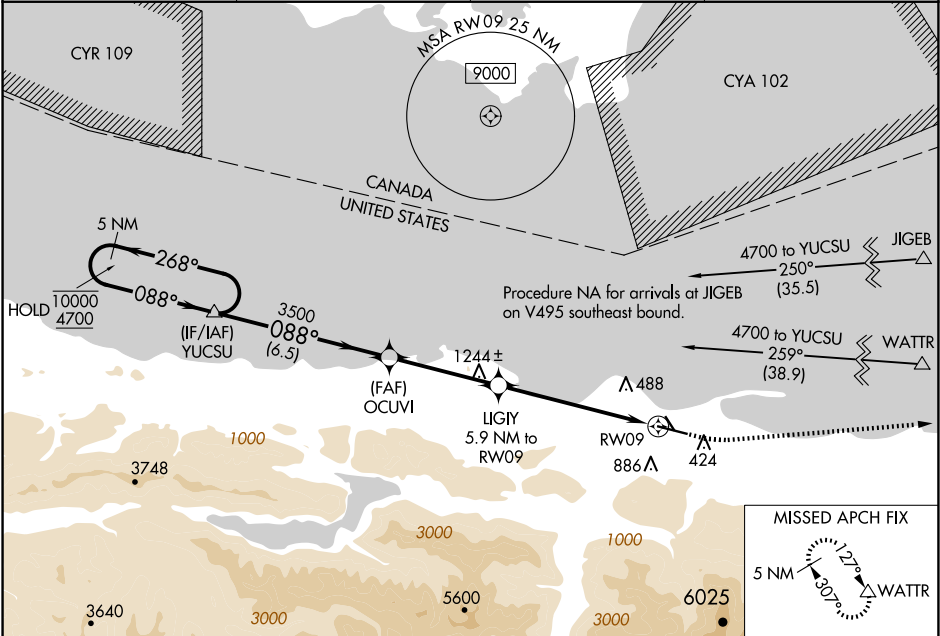


WAAS CH <b>77703</b> <b>W09A</b>	APP CRS <b>088°</b>	Rwy ldg <b>6347</b> TDZE <b>285</b> Apt Elev <b>291</b>
--	------------------------	---

RNAV (GPS) RWY 9  
WILLIAM R FAIRCHILD INTL (CLM)

RNP APCH - GPS.	MALSR 	MISSED APPROACH: Climb to 1000 then climbing left turn to 5400 direct WATTR and hold, continue climb-in-hold to 5400.
 Circling Rwy 13, 31 NA at night. Baro-VNAV NA. For inop ALS, increase LNAV/VNAV all Cats visibility to 1 3/8 SM and LNAV Cat C/D visibility to 1 7/8 SM. Circling NA south of Rwy 9-27.		

ASOS <b>135.175</b>	WHIDBEY APP CON <b>118.2 285.65</b>	CLNC DEL <b>124.15</b>	UNICOM <b>122.975 (CTAF)</b>
------------------------	--	---------------------------	---------------------------------



3520

ELEV 291		TDZE 285		
5 NM Holding Pattern		1000 5400 WATTR		
10000 4700		3500 2200		
GP 3.00° TCH 54		6.5 NM 4 NM 3.8 NM 2.1		
CATEGORY	A	B	C	D
LPV DA	505-1½ 220 (300-½)			
LNAV/VNAV DA	757-1⅛ 472 (500-1⅛)			
LNAV MDA	960-½	675 (700-½)	960-1½	675 (700-1½)
CIRCLING	960-1	669 (700-1)	960-1⅞	1000-2¼
			669 (700-1⅞)	709 (800-2¼)
MIRL Rwy 9-27		REIL Rwy 27		

NW-1, 07 AUG 2025 to 04 SEP 2025

NW-1, 07 AUG 2025 to 04 SEP 2025