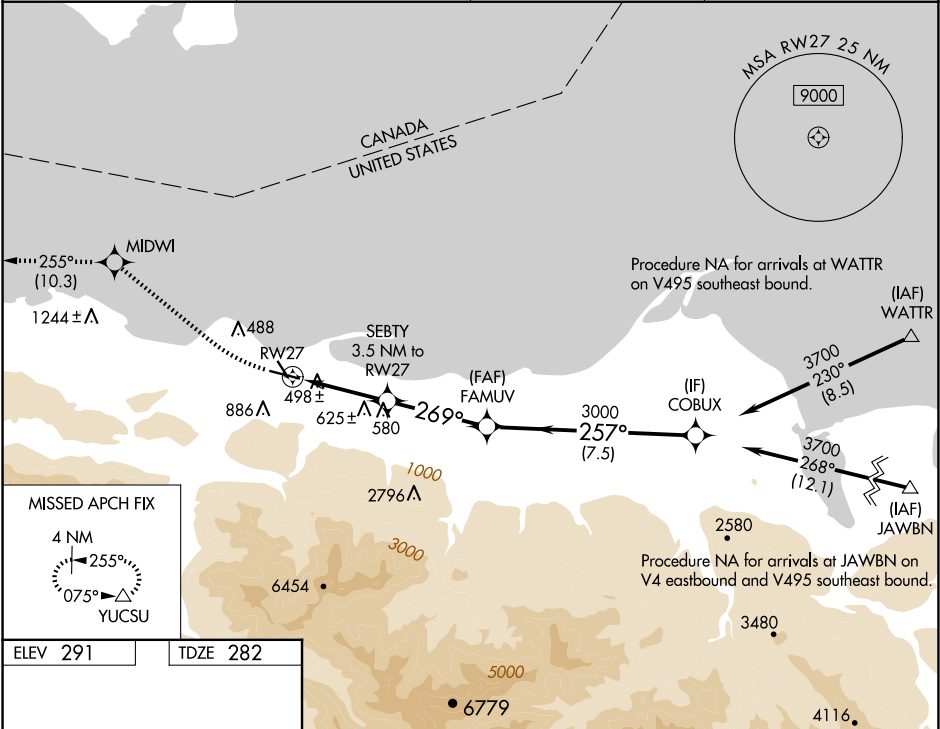


WAAS CH 90338 W27A	APP CRS 269°	Rwy Idg TDZE Apt Elev	4993 282 291
--	------------------------	-----------------------------	---

RNAV (GPS) RWY 27
WILLIAM R FAIRCHILD INTL (CLM)

RNP APCH - GPS. ▼ Circling Rwy 13, 31 NA at night. ▲ Rwy 27 helicopter visibility reduction below ¾ SM NA. Circling NA south of Rwy 9-27.		MISSED APPROACH: Climbing right turn to 4000 direct MIDWI and on track 255° to YUCSU and hold.	
ASOS 135.175	WHIDBEY APP CON 118.2 285.65	CLNC DEL 124.15	UNICOM 122.975 (CTAF) 1



ELEV 291		TDZE 282	
MIRL Rwy 9-27 1 REIL Rwy 27		4000 MIDWI tr 255° YUCSU	
SEBTY 3.5 NM to RW27		COBUX	
RW27 1.5 NM to RW27		FAMUV	
1620 1.5 NM 2 NM 3.7 NM 7.5 NM		3000 257° 3700	
CATEGORY		A B C D	
LP MDA		760-1 478 (500-1) 760-1 ¾ 478 (500-1 ¾)	
LNAV MDA		920-1 638 (700-1) 920-1 ¾ 638 (700-1 ¾)	
CIRCLING		920-1 629 (700-1) 920-1 ¾ 629 (700-1 ¾) 1000-2 ¼ 709 (800-2 ¼)	