

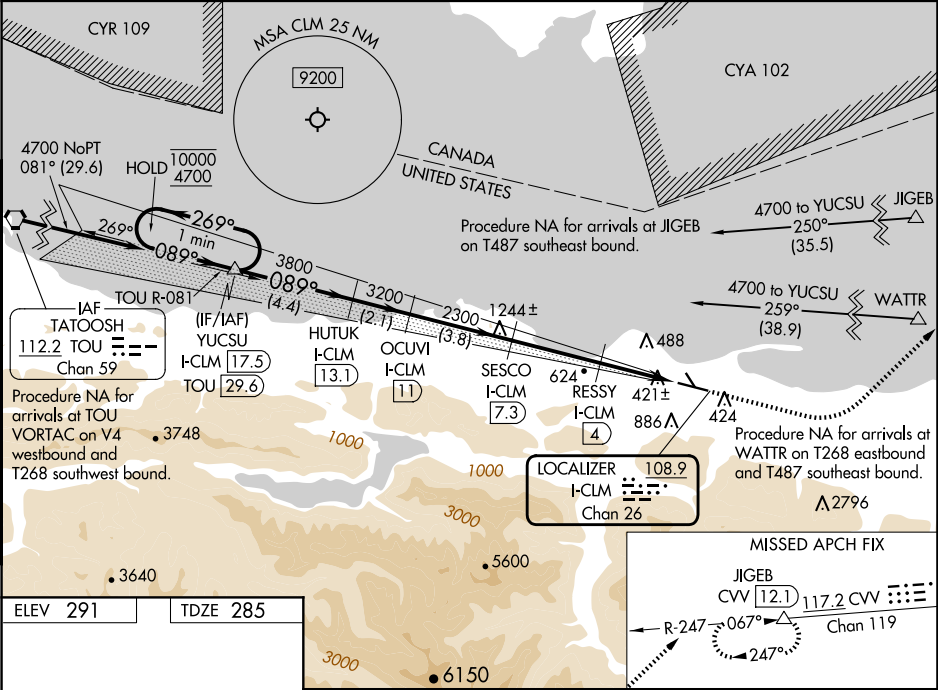
LOC/DME I-CLM	APP CRS	Rwy Idg	6347
108.9	089°	TDZE	285
Chan 26		Apt Elev	291

ILS or LOC RWY 9

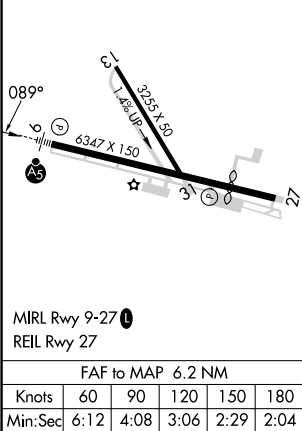
WILLIAM R FAIRCHILD INTL (CLM)

RNAV 1 - GPS. From JIGEB or WATTR.		<div>MALSR</div> <div></div>	<div>MISSED APPROACH: Climb to 1000 then climbing left turn to 5400 on heading 030° and CVV VOR/DME R-247 to JIGEB/CVV 12.1 DME and hold, continue climb-in-hold to 5400.</div>
DME required.			
<div><div><div><div><div></div><div></div></div><div></div></div></div><div>Circling NA south of Rwy 9-27. Circling Rwy 13, 31 NA at night. For inop ALS, increase S-ILS 9 visibility to ¾ SM.</div></div>			

ASOS 135.175	WHIDBEY APP CON 118.2 285.65	CLNC DEL 124.15	UNICOM 122.975 (CTAF)
-----------------	---------------------------------	--------------------	--------------------------



ELEV 291	TDZE 285
----------	----------



<p>YUCSU I-CLM 17.5</p> <p>HUTUK I-CLM 13.1</p> <p>OCUVI I-CLM 11</p> <p>SESCO I-CLM 7.3</p> <p>RESSY I-CLM 4</p> <p>CVV R-247</p> <p>JIGEB △</p>				<p>1000 ↑</p>	<p>5400 hdg 030°</p>		
<p>One Minute Holding Pattern</p>							
<p>10000 ← 269° 4700 089° →</p>				<p>089°</p>	<p>3800</p>	<p>3200</p>	<p>2300</p>
<p>GS 3.00° TCH 54</p>					<p>2300</p>	<p>1260</p>	<p>2300</p>
<p>4.4 NM</p>				<p>2.1 NM</p>	<p>3.8 NM</p>	<p>3.3 NM</p>	<p>1.7</p>
<p>1.2</p>							
CATEGORY	A	B	C	D			
S-ILS 9	495-½ 210 (300-½)						
S-LOC 9	720-½ 435 (500-½)			720-¾ 435 (500-¾)			
CIRCLING	800-1 509 (600-1)			800-1½ 509 (600-1½)		1000-2¼ 709 (800-2¼)	