

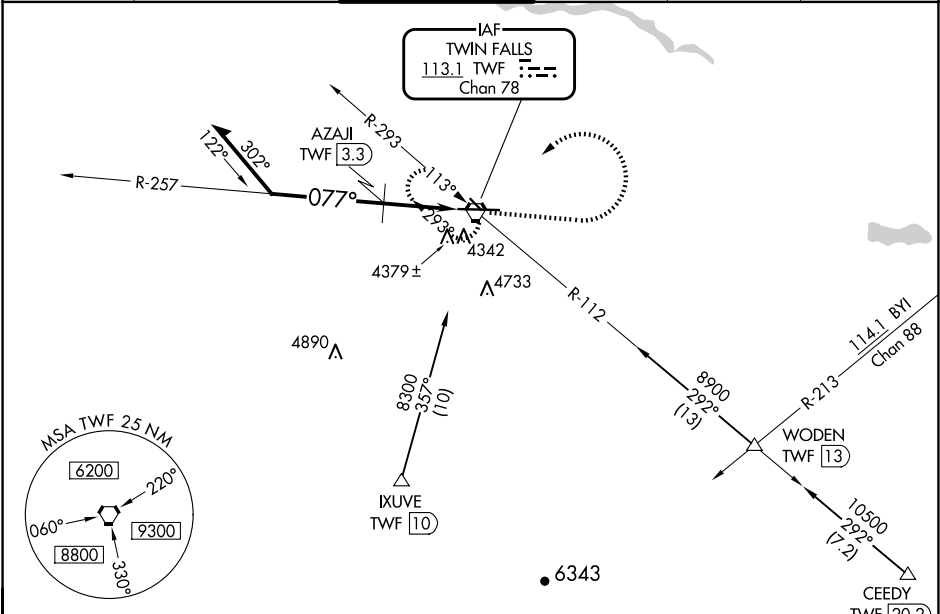
VORTAC TWF	APP CRS	Rwy Ldg	8704
113.1	077°	TDZE	4149
Chan 78		Apt Elev	4154

VOR RWY 8
JOSLIN FLD/MAGIC VALLEY RGNL (TWF')

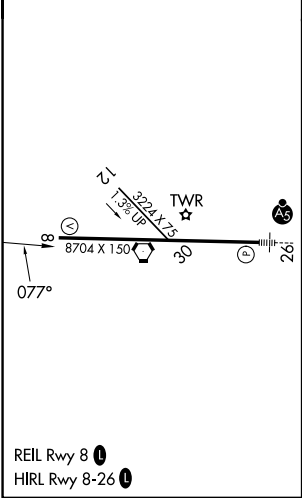
⚠ Circling to Rwy 30 NA at night. When local altimeter setting not received, use Jerome altimeter setting and increase all MDA 60 feet and S-8 Cats C and D visibility ½ mile, S-8 Cat B and Circling Cat B and C visibility ¼ mile. Increase AZAJI FIX minimums S-8 Cat C and D and Circling Cat C visibility ¼ mile. VDP NA when using Jerome altimeter setting.

MISSED APPROACH: Climb to 6000 then left turn direct TWF VORTAC and hold.

ASOS 135.025	TWIN FALLS APP CON* 126.7 353.75	TWIN FALLS TOWER* 118.2 (CTAF) 0 317.5	GND CON 121.7	CLNC DEL 123.65	UNICOM 122.95
-----------------	-------------------------------------	---	------------------	--------------------	------------------



ELEV 4154	TDZE 4149
-----------	-----------



VGSI and descent angle not coincident (VGSI Angle 3.00/TCH 49).			
Remain within 10 NM			
TWF VORTAC			
*5120 when using Jerome altimeter setting.			
CATEGORY	A	B	C
S-8	5060-1¼	911 (1000-1¼)	5060-2½
CIRCLING	5060-1¼	906 (1000-1¼)	5100-2¾
AZAJI FIX MINIMUMS			
S-8	4640-1	491 (500-1)	4640-1¾
CIRCLING	4700-1	4780-1	5100-2¾

NW-1, 07 AUG 2025 to 04 SEP 2025

NW-1, 07 AUG 2025 to 04 SEP 2025