

VORTAC TWF	APP CRS	Rwy Ldg	8704
113.1	248°	TDZE	4154
Chan 78		Apt Elev	4154

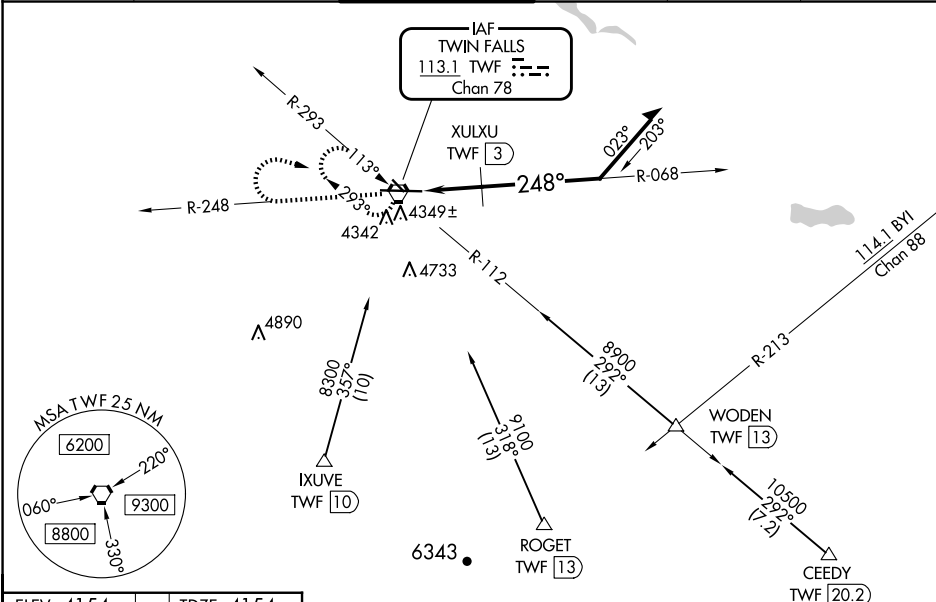
VOR RWY 26
JOSLIN FLD/MAGIC VALLEY RGNL (TWF)

⚠ Night landing: Rwy 30 NA. VDP NA with Jerome altimeter setting. When local altimeter setting not received, use Jerome altimeter setting and increase all MDA 60 feet; increase S-26 Cat A visibility ¼ mile, Cat C/D ½ mile, Circling Cat C ¼ mile, and XULXU FIX S-26 Cat C/D ½ mile. For inop MALSR, increase S-26 Cat C/D visibility to 2½ miles; when using Jerome altimeter setting increase XULXU FIX S-26 Cat C/D visibility to 1½ mile.

MALSR

MISSED APPROACH: Climb to 6000 on TWF VORTAC R-248 then right turn direct TWF VORTAC and hold.

ASOS 135.025	TWIN FALLS APP CON ★ 126.7 353.75	TWIN FALLS TOWER ★ 118.2 (CTAF) 317.5	GND CON 121.7	CLNC DEL 123.65	UNICOM 122.95
-----------------	--------------------------------------	--	------------------	--------------------	------------------



ELEV 4154 TDZE 4154

REIL Rwy 8 1
HIRL Rwy 8-26 1

6000 TWF R-248 TWF VORTAC

10000

VGSI and descent angles not coincident (VGSI Angle 3.00/TCH 55).

Remain within 10 NM

068° 248°

6000 5000

3.43 TCH 55

1.2 NM 0.9 NM

CATEGORY	A	B	C	D
S-26	5000-½ 846 (900-½)	5000-¾ 846 (900-¾)	5000-1⅞ 846 (900-1⅞)	
CIRCLING	5000-1¼ 846 (900-1¼)	5100-2¾ 946 (1000-2¾)	5100-3 946 (1000-3)	
XULXU FIX MINIMUMS				
S-26	4600-½ 546 (600-½)	446 (500-½)	4600-⅞ 546 (500-⅞)	
CIRCLING	4700-1 546 (600-1)	4780-1 626 (700-1)	5100-2¾ 946 (1000-2¾)	5100-3 946 (1000-3)

NW-1, 07 AUG 2025 to 04 SEP 2025

NW-1, 07 AUG 2025 to 04 SEP 2025