

WAAS CH <b>56311</b> <b>W26A</b>	APP CRS <b>258°</b>	Rwy Ldg TDZE <b>4154</b> Apt Elev <b>4154</b>
--	------------------------	---

RNAV (GPS) RWY 26

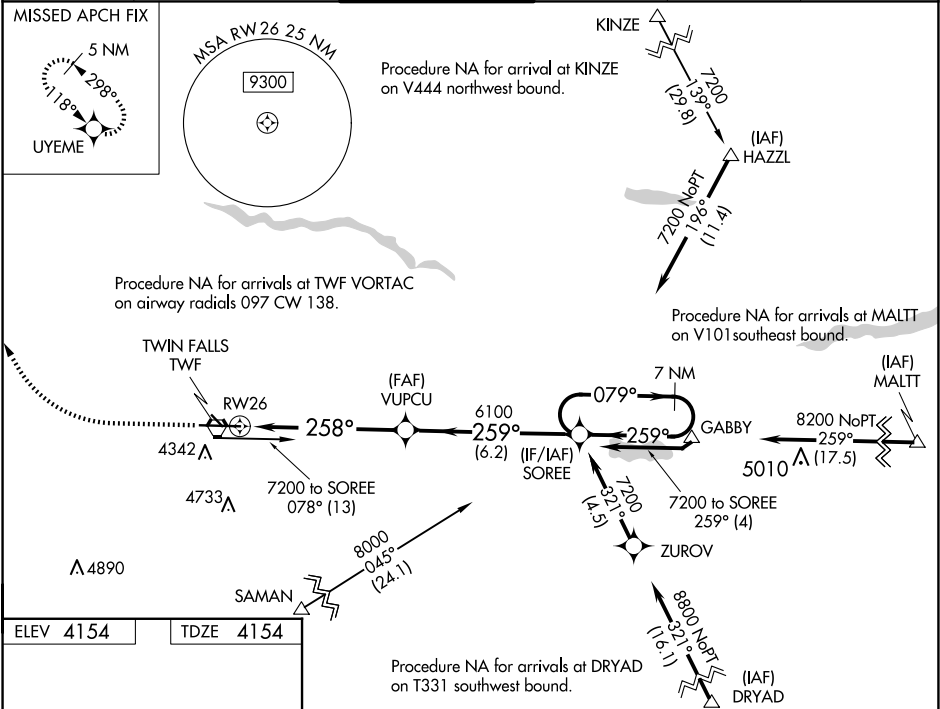
JOSLIN FLD/MAGIC VALLEY RGNL (TWF')

Circling to Rwy 30 NA at night.  
For uncompensated Baro-VNAV systems, LNAV/VNAV NA below  
-16°C (4°F) or above 49°C (121°F).  
DME/DME RNP-0.3 NA.

MALSR

MISSED APPROACH: Climb to  
4700 then climbing right turn to  
6000 direct UYEME and hold.

ASOS <b>135.025</b>	TWIN FALLS APP CON ★ <b>126.7 353.75</b>	TWIN FALLS TOWER ★ <b>118.2 (CTAF) 0 317.5</b>	GND CON <b>121.7</b>	CLNC DEL <b>123.65</b>	UNICOM <b>122.95</b>
------------------------	---	---	-------------------------	---------------------------	-------------------------



ELEV 4154

TDZE 4154

4700

6000

UYEME

\* LNAV only

RW26

1.5 NM

258°

6100

259°

7200

079°

259°

7200

7 NM Holding Pattern

REIL Rwy 8 0

HIRL Rwy 8-26 0

TWR

224X15

1.9° UP

8704 X 150

258°

CATEGORY	A	B	C	D
LPV DA	4354-1/2	200 (200-1/2)		
LNAV/ VNAV DA	4533-3/4	379 (400-3/4)		
LNAV MDA	4680-1/2	526 (600-1/2)	4680-1	526 (600-1)
CIRCLING	4700-1 546 (600-1)	4780-1 626 (700-1)	5160-3	1006 (1100-3)