

WAAS CH 77913 W32A	APP CRS 321°	Rwy Ldg 7975 TDZE 222 Apt Elev 258
--	------------------------	---

RNAV (GPS) RWY 32
SHREVEPORT RGNL (SHV)

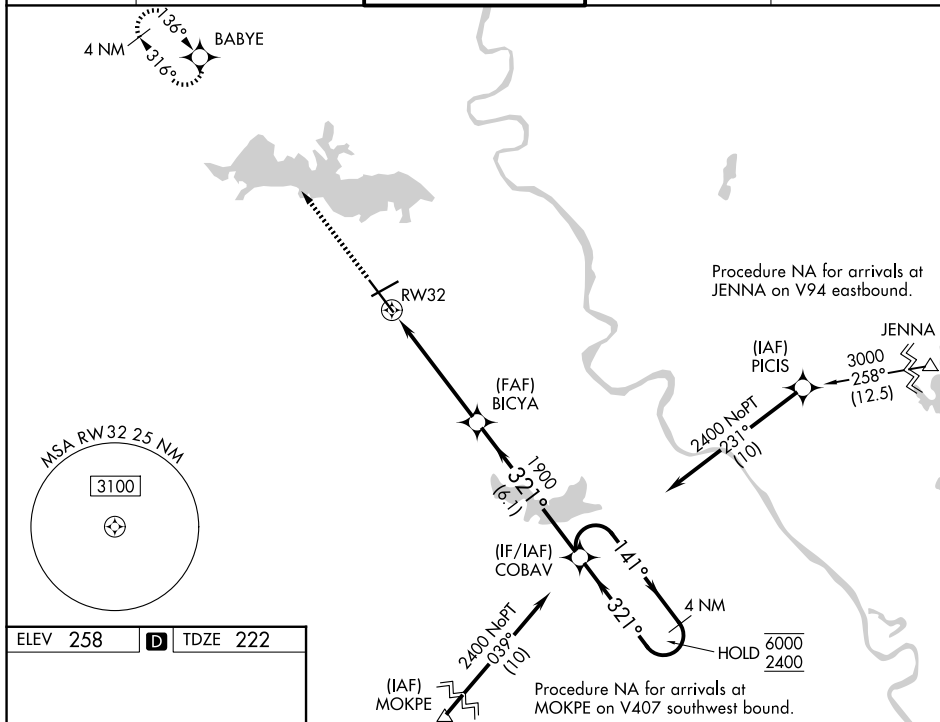
RNP APCH.

T Rwy 32 helicopter visibility reduction below RVR 4000 NA. Inop table does not apply to LPV all Cats. For uncompensated Baro-VNAV systems, LNAV/VNAV NA below -6°C or above 54°C. For inop ALS, increase LNAV/VNAV all Cats visibility to RVR 6000 and LNAV Cat A and B visibility to RVR 5500.

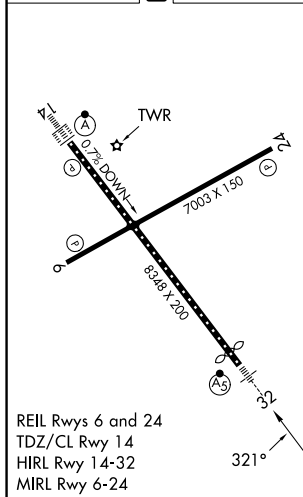
MALSR

MISSED APPROACH:
Climb to 2600 direct
BABYE and hold.

ATIS 128.45	SHREVEPORT APP CON 119.9 335.55	SHREVEPORT TOWER 121.4 236.775	GND CON 121.175 236.775	CLNC DEL 124.65
-----------------------	---	--	-----------------------------------	---------------------------



ELEV 258	D	TDZE 222
----------	----------	----------



***LNAV only.**

***1.3 NM to RW32**

BICYA 1900

COBAV 4 NM Holding Pattern

141°

6000

2400

GP 3.00'

TCH 52'

CATEGORY	A	B	C	D
LPV DA		422/40	200 (200-¾)	
LNAV/VNAV DA		629/40	407 (400-¾)	
LNAV MDA	680/40	458 (500-¾)	680/45	458 (500-¾)
CIRCLING	760-1	502 (600-1)	980-2 722 (800-2)	1100-2½ 842 (900-2½)

RNAV (GPS) RWY 32