

NDB

MOG

404

APP CRS

356°

Rwy Idg

TDZE

N/A

Apt Elev

2651

NDB or GPS-A

SISKIYOU COUNTY (SIY)

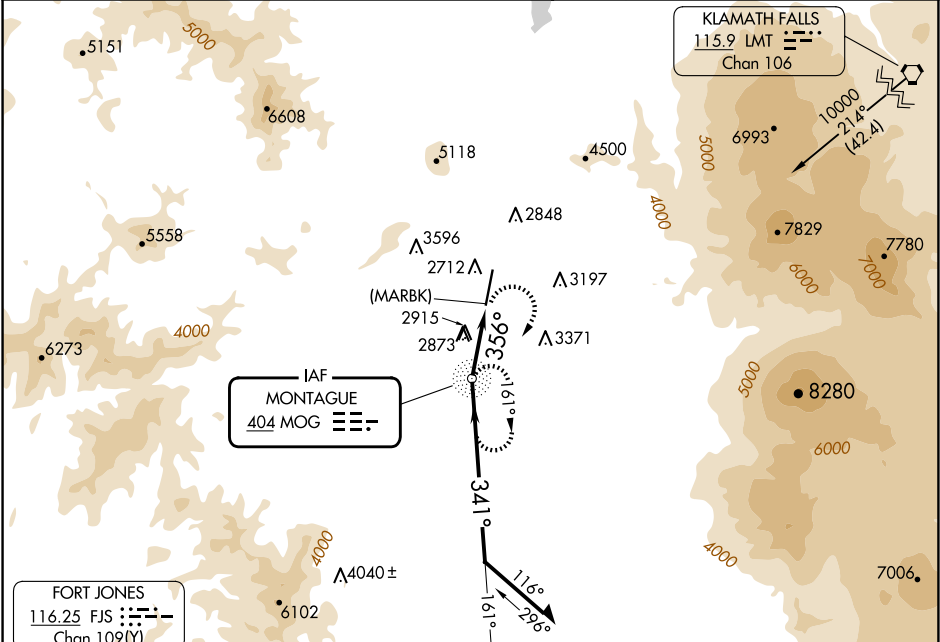
▼

NA

Use Siskiyou County altimeter setting; when not available, use Montague-Yreka Rohrer Fld altimeter setting; when neither received, procedure not authorized. Circling NA for Cats C and D west of Rwy 17-35.

MISSED APPROACH: Climbing right turn to 6800 direct MOG NDB and hold.

ASOS 121.125	SEATTLE CENTER 124.85 306.3	UNICOM 123.0 (CTAF) 0
-----------------	--------------------------------	--------------------------



Fort Jones

116.25 FJS

Chan 109(Y)

Montague

404 MOG

MSA MOG 25 NM

8600

9300

9600

15200

ELEV 2651

MIRL Rwy 17-35

REIL Rws 17 and 35

Remain within 10 NM

MOG NDB

6800

4800

356°

341°

161°

2.7 NM

(MARBK)

6800

MOG

2691

7490 x 1.50

35

356°

CATEGORY	A	B	C	D	FAF to MAP 2.7 NM					
CIRCLING	3760-1¼ 1109 (1200-1¼)	3760-1½ 1109 (1200-1½)	3980-3 1329 (1400-3)	4220-3 1569 (1600-3)	Knots	60	90	120	150	180
					Min:Sec	2:42	1:48	1:21	1:05	0:54