

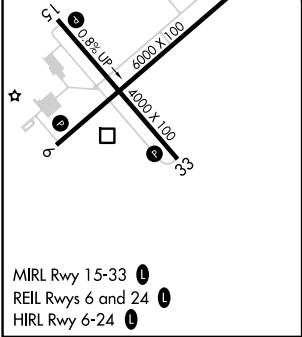
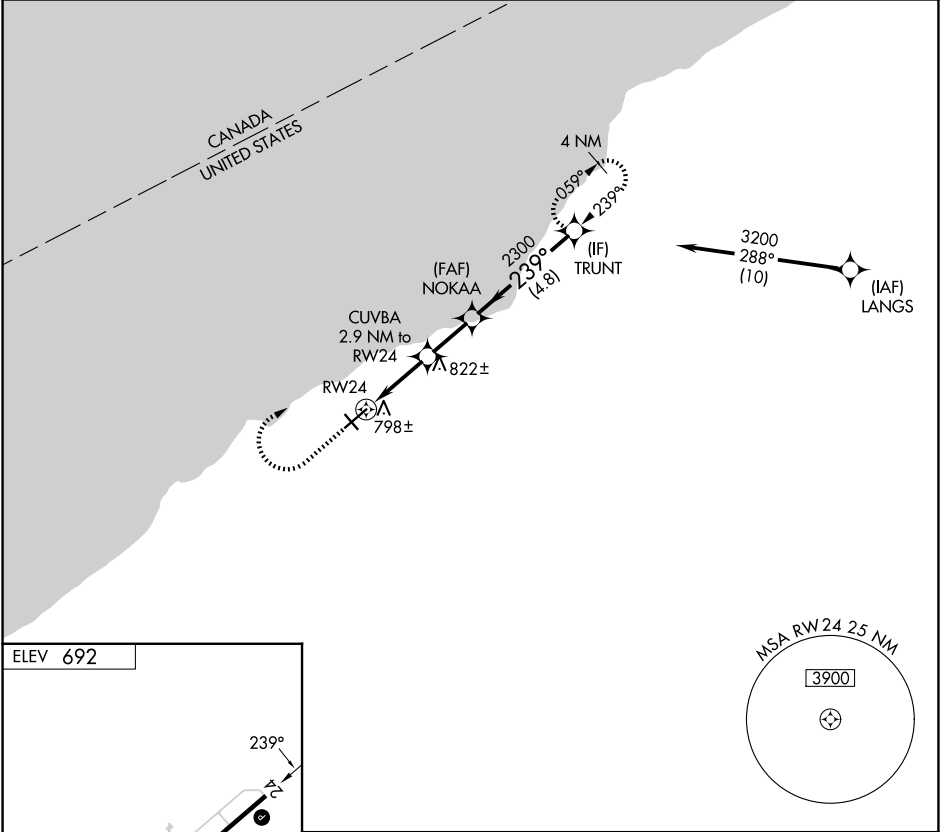
APP CRS	Rwy Ldg	N/A
239°	TDZE	N/A
	Apt Elev	692

RNAV (GPS)-A

CHAUTAUQUA COUNTY/DUNKIRK (DKK)

RNP APCH - GPS.	<div><div><div>▼</div><div>▲</div><div>❄</div></div><div><div>Circling Cat D NA southeast of Rwy 6 and southwest of Rwy 33.</div><div>Circling Rwy 6, 24, 33 NA at night.</div><div>Rwy 6, 24, 33 helicopter visibility reduction below 1 SM NA.</div></div></div>	MISSED APPROACH: Climb to 1900 then climbing right turn to 3200 direct TRUNT and hold.
-----------------	--	--

ASOS 119.275	BUFFALO APP CON 126.5 317.6	UNICOM 123.075 (CTAF) 1
-----------------	--------------------------------	----------------------------



1900	3200	TRUNT	Visual Segment - Obstacles.
↑	↪	✧	
CUVBA 2.9 NM to RW24	NOKAA	TRUNT	
239°	2300	3200	
2.9 NM	2.1 NM	4.8 NM	
CATEGORY	A	B	C
CIRCLING	1200-1 508 (600-1)	1320-1 628 (700-1)	1640-2¾ 948 (1000-2¾)
			2140-3 1448 (1500-3)