

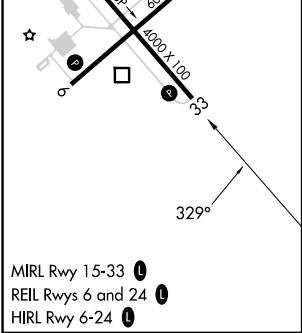
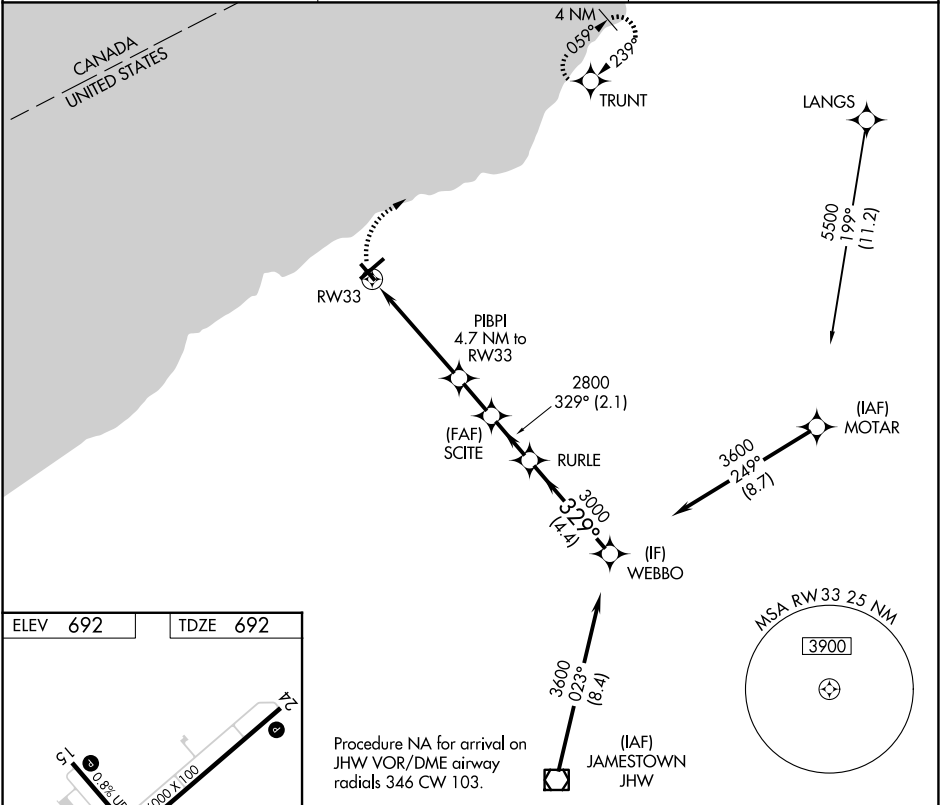
APP CRS	Rwy Ldg	4000
329°	TDZE	692
	Apt Elev	692

RNAV (GPS) RWY 33

CHAUTAUQUA COUNTY/DUNKIRK (DKK)

RNP APCH.	<div><div><div>⚠</div><div>⚠</div></div><div><div>Circling Cat D NA southeast of Rwy 6 and southwest of Rwy 33.</div><div>Rwy 33 helicopter visibility reduction below 1 SM NA.</div><div>Straight-In Rwy 33 NA at night, Circling Rwy 6, 24, 33 NA at night.</div></div></div>	MISSED APPROACH: Climbing right turn to 3200 direct TRUNT and hold.
-----------	---	---

ASOS 119.275	BUFFALO APP CON 126.5 317.6	UNICOM 123.075 (CTAF) 0
-----------------	--------------------------------	----------------------------



MIRL Rwy 15-33 0
REIL Rwy 6 and 24 0
HIRL Rwy 6-24 0

3200	TRUNT	Visual Segment - Obstacles.				WEBBO
		PIBPI 4.7 NM to RW33	SCITE	RURL	329°	3600
			2800	3000		
		4.7 NM	1.8 NM	2.1 NM	4.4 NM	
CATEGORY	A	B	C	D		
LNNAV MDA	1860-1¼ 1168 (1200-1¼)	1860-1½ 1168 (1200-1½)	1860-3 1168 (1200-3)	1168 (1200-3)		
CIRCLING	1860-1¼ 1168 (1200-1¼)	1860-1½ 1168 (1200-1½)	1860-3 1168 (1200-3)	2140-3 1448 (1500-3)		