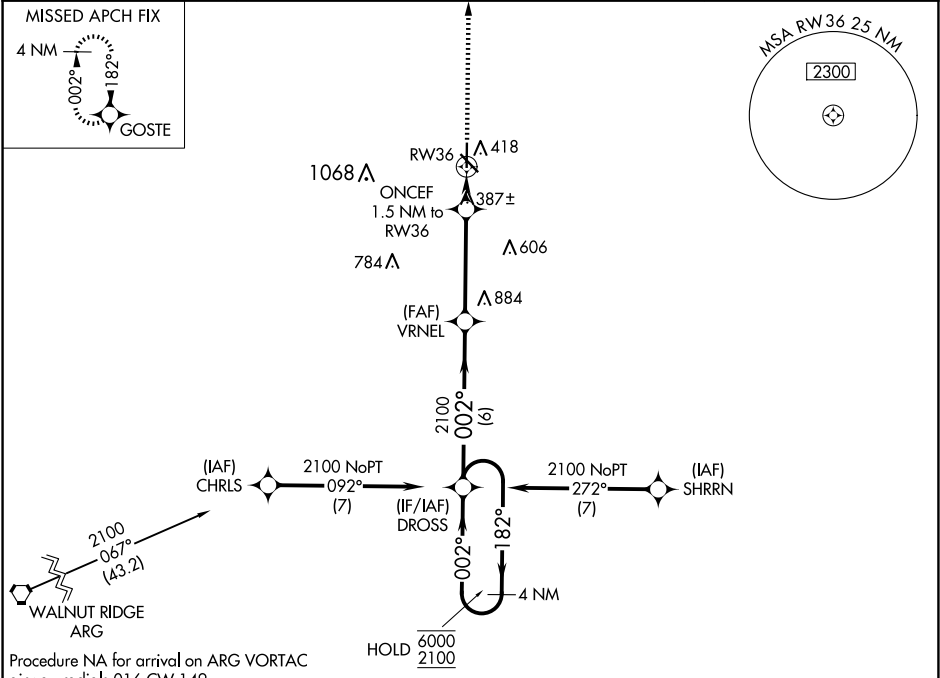


WAAS CH 93815 W36A	APP CRS 002°	Rwy Idg TDZE Apt Elev	5010 295 295
--	------------------------	-----------------------------	---

RNAV (GPS) RWY 36

MALDEN RGNL (MAW)

RNP APCH-GPS.		MISSED APPROACH: Climb to 2100 direct GOSTE and hold.	
▼ ▲ For uncompensated Baro-VNAV systems, LNAV/VNAV NA below -15°C or above 54°C.			
AWOS-3PT 119.825	MEMPHIS CENTER 133.65 292.15	GCO 135.075	UNICOM 122.8 (CTAF) 0



4 NM Holding Pattern

DROSS

VRNEL

2100

ONCEF 1.5 NM to RW36

1 NM to RW36

RW36

6000

2100

182°

002°

002°

2100

820

GP 3.00°

TCH 40

6 NM

4 NM

0.6

1 NM

ELEV 295

TDZE 295

REIL Rwy 14, 18, 32, and 36

MIRL Rwy 14-32 and 18-36

81

36

500' X 30'

5010

100'

002° to RW36

CATEGORY	A	B	C	D
LPV DA	495-1	200 (200-1)		NA
LNAV/ VNAV DA	545-1	250 (300-1)		NA
LNAV MDA	640-1	345 (400-1)		NA
CIRCLING	720-1 425 (500-1)	800-1 505 (600-1)	800-1½ 505 (600-1½)	NA

NC-3, 07 AUG 2025 to 04 SEP 2025

NC-3, 07 AUG 2025 to 04 SEP 2025