

WAAS

CH **78315**

W18A

APP CRS

182°

Rwy Idg

5010

TDZE

295

Apt Elev

295

RNAV (GPS) RWY 18

MALDEN RGNL (MAW)

RNP APCH-GPS.

▼

For uncompensated Baro-VNAV systems, LNAV/VNAV NA below -15°C or above 54°C.

MISSED APPROACH: Climb to 2100 direct DROSS and hold.

AWOS-3PT

119.825

MEMPHIS CENTER

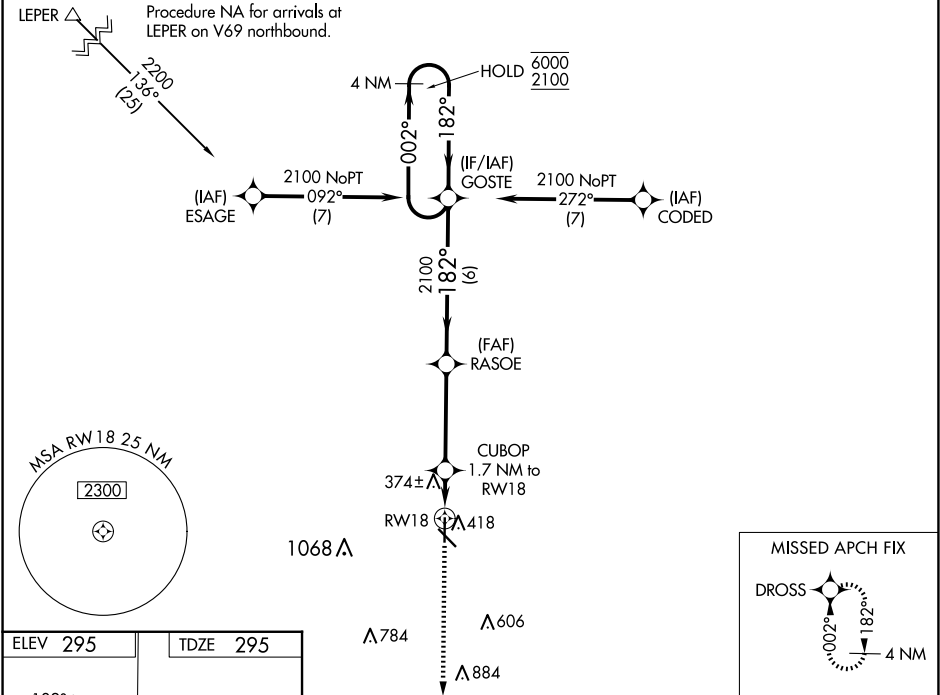
133.65 292.15

GCO

135.075

UNICOM

122.8 (CTAF) 0



ELEV 295

TDZE 295

182° to RW18

2100 DROSS

RASOE

2100

GOSTE

2100

CUBOP 1.7 NM to RW18

1 NM to RW18

880

4 NM Holding Pattern

002° 6000

182° 2100

GP 3.00°

TCH 40

CATEGORY	A	B	C	D
LPV DA	495-1	200 (200-1)		NA
LNAV/VNAV DA	545-1	250 (300-1)		NA
LNAV MDA	640-1	345 (400-1)		NA
CIRCLING	720-1 425 (500-1)	800-1 505 (600-1)	800-1½ 505 (600-1½)	NA