


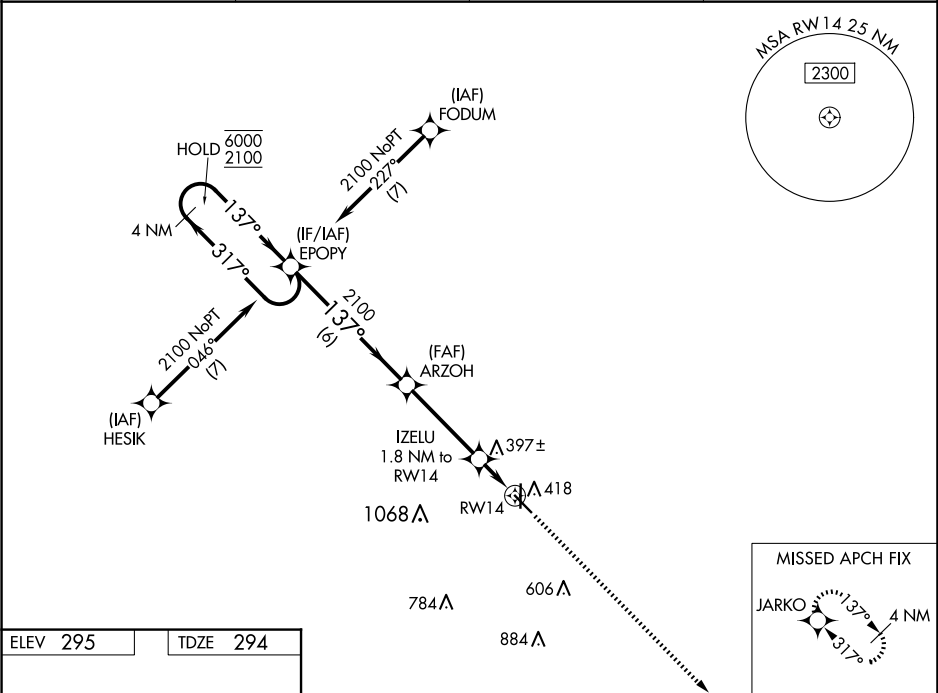


WAAS CH 61315 W14A	APP CRS 137°	Rwy Idg TDZE Apt Elev	5001 294 295
--	------------------------	-----------------------------	---

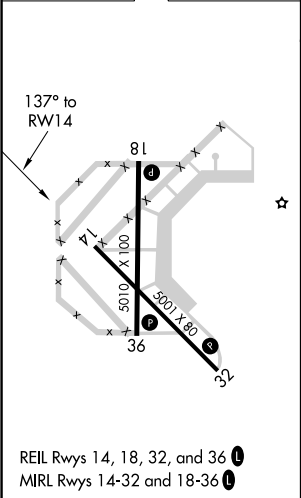
RNAV (GPS) RWY 14


MALDEN RGNL (MAW)

RNP APCH-GPS.		MISSED APPROACH: Climb to 2100 direct JARKO and hold.	
 	For uncompensated Baro-VNAV systems, LNAV/VNAV NA below -15°C or above 54°C.		
AWOS-3PT 119.825	MEMPHIS CENTER 133.65 292.15	GCO 135.075	UNICOM 122.8 (CTAF) 



ELEV 295	TDZE 294
----------	----------



4 NM Holding Pattern		EPOPY	ARZOH	2100	IZELU 1.8 NM to RW14	1 NM to RW14	RW14
6000 ← 317° 2100 137° →		137°		2100	920	0.8	1 NM
GP 3.00° TCH 40							
		6 NM		3.7 NM		0.8	
CATEGORY	A	B	C	D			
LPV DA	494-1 200 (200-1)			NA			
LNAV/ VNAV DA	544-1 250 (300-1)			NA			
LNAV MDA	660-1 366 (400-1)			NA			
 CIRCLING	720-1 425 (500-1)	800-1 505 (600-1)	800-1½ 505 (600-1½)	NA			