

VORTAC RAP 112.3 Chan 70	APP CRS 141°	Rwy Idg 8701 TDZE 3191 Apt Elev 3204
--	------------------------	---

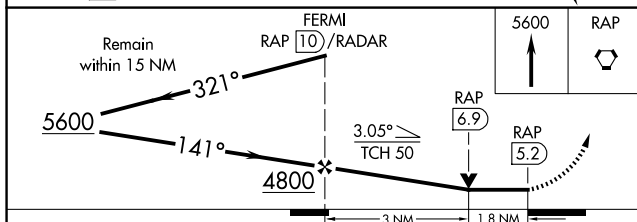
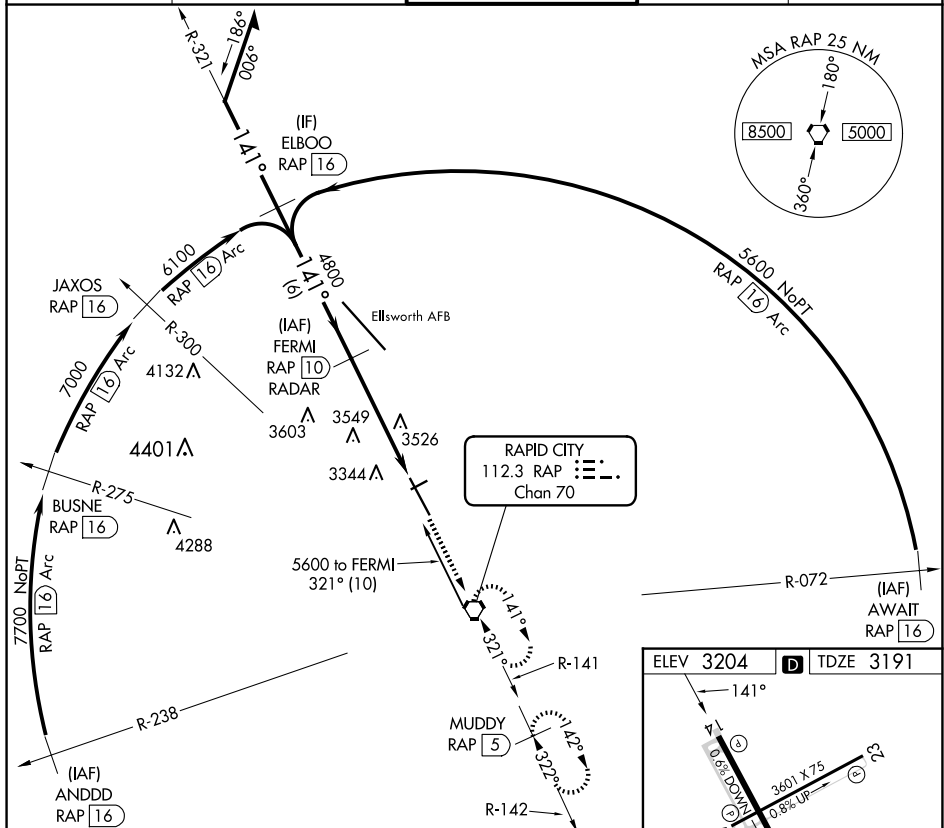
VOR or TACAN RWY 14
RAPID CITY RGNL (RAP)


DME or RADAR required.	
------------------------	--

T Rwy 14 helicopter visibility reduction below $\frac{3}{4}$ SM NA.

MISSED APPROACH: Climb to 5600 direct RAP VORTAC and hold, continue climb-in-hold to 5600. (TACAN aircraft continue on RAP R-142 to MUDDY 5 DME and hold SE, RT, 322° inbound.)

ASOS 118.525	ELLSWORTH APP CON ★ 119.5 259.1	RAPID CITY TOWER ★ 125.85 (CTAF) 0 257.8	GND CON 121.9	UNICOM 122.95
-----------------	------------------------------------	---	------------------	------------------



CATEGORY	A	B	C	D	E	MIRL Rwy 5-23 HIRL Rwy 14-32					
S-14	3800-1 609 (600-1)		3800-1 $\frac{3}{4}$ 609 (600-1 $\frac{3}{4}$)		3800-2 609 (600-2)	FAF to MAP 4.8 NM					
 CIRCLING	3800-1 596 (600-1)	3840-1 636 (700-1)	3860-1 $\frac{3}{4}$ 656 (700-1 $\frac{3}{4}$)	3940-2 $\frac{1}{4}$ 736 (800-2 $\frac{1}{4}$)	3960-2 $\frac{3}{4}$ 756 (800-2 $\frac{3}{4}$)	Knots	60	90	120	150	180
						Min:Sec	4:48	3:12	2:24	1:55	1:36

RAPID CITY, SOUTH DAKOTA
Orig-G 10OCT19

44°03'N-103°03'W

RAPID CITY RGNL (RAP)
VOR or TACAN RWY 14

NC-1, 07 AUG 2025 to 04 SEP 2025

NC-1, 07 AUG 2025 to 04 SEP 2025