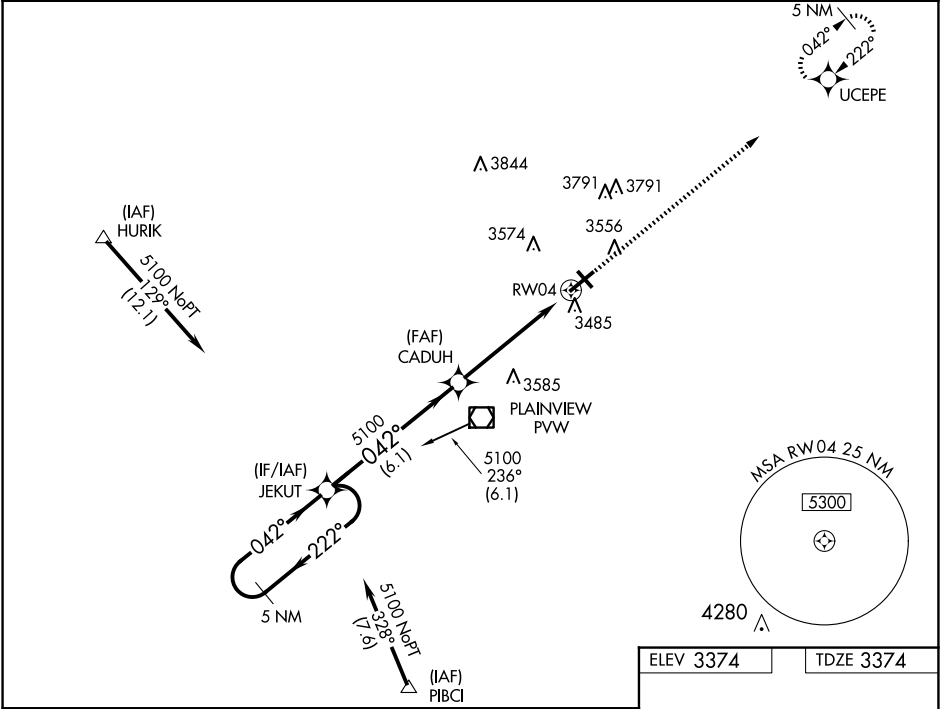


WAAS CH <b>53302</b> <b>W04A</b>	APP CRS <b>042°</b>	Rwy Idg <b>5997</b> TDZE <b>3374</b> Apt Elev <b>3374</b>
--	------------------------	---

RNAV (GPS) RWY 4  
HALE COUNTY (PVW)

RNP APCH.	For uncompensated Baro-VNAV systems, LNAV/VNAV NA below -21°C or above 42°C. VDP and Baro-VNAV NA when using Lubbock altimeter setting. Rwy 4 helicopter visibility reduction below 3/4 SM NA. When local altimeter setting not received, use Lubbock altimeter setting: increase all DA 83 feet and increase all LPV and LNAV/VNAV visibility 1/2 SM, increase all MDA 100 feet and LNAV Cat C/D visibility 1/4 SM and Circling Cat C/D visibility 1/2 SM.	MISSED APPROACH: Climb to 5000, direct UCEPE and hold.
-----------	---	---

AWOS-3 <b>119.675</b>	LUBBOCK APP CON <b>119.2 351.8</b>	CLNC DEL <b>118.4</b>	UNICOM <b>123.0 (CTAF) 0</b>
--------------------------	---------------------------------------	--------------------------	---------------------------------



5NM Holding Pattern		VGSi and RNAV glidepath not coincident (VGSi Angle 3.50/TCH 51).		5000	UCEPE
JEKUT		CADUH		↑	✦
5100 ← 222°		042° →		*LNAV only.	
GP 3.00°		5100		*1 NM to RW04	
TCH 45		6.1 NM		RW04	
		4.3 NM		1 NM	
CATEGORY	A	B	C	D	
LPV DA	3624-1		250 (300-1)		
LNAV/VNAV DA	3730-1¼		356 (400-1¼)		
LNAV MDA	3800-1	426 (500-1)	3800-1¼	426 (500-1¼)	
CIRCLING	3940-1¼	566 (600-1¼)	4160-2¼ 786 (800-2¼)	4160-2½ 786 (800-2½)	

