

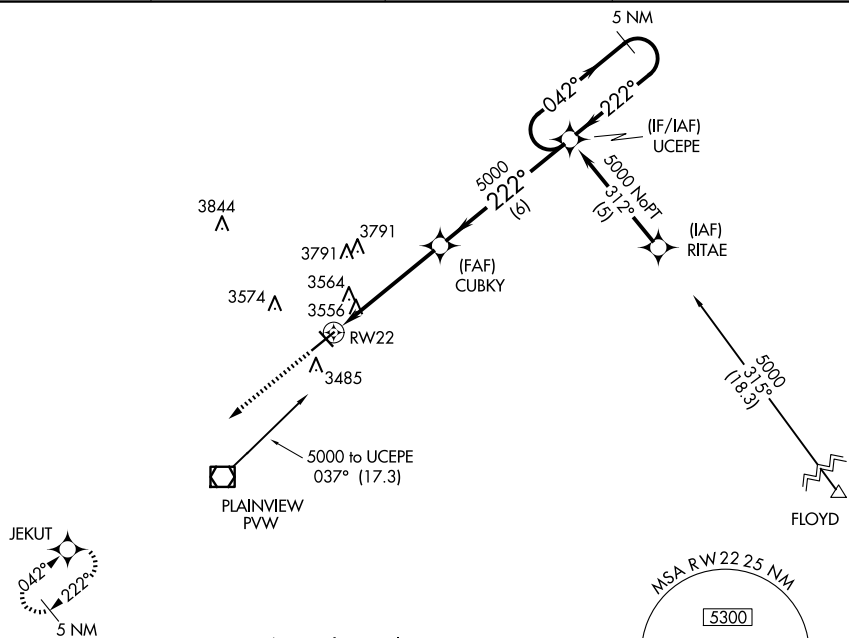
APP CRS 222°	Rwy Idg 5997 TDZE 3373 Apt Elev 3374
------------------------	---

RNAV (GPS) RWY 22

A DME/DME RNP-0.3 NA. When local altimeter setting not received, use Lubbock altimeter setting and increase all MDAs 100 feet and increase Circling Cat C/D visibility ½ SM. Visibility reduction by helicopters NA.

MISSED APPROACH: Climb to 5100
direct JEKUT and hold.

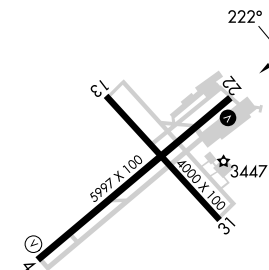
AWOS-3 119.675	LUBBOCK APP CON 119.2 351.8	CLNC DEL 118.4	UNICOM 123.0 (CTAF) 0
--------------------------	---------------------------------------	--------------------------	--



SC-2, 07 AUG 2025 to 04 SEP 2025

ELEV 3374		TDZE 3373
-----------	--	-----------

Procedure NA for arrivals
at PVW VOR/DME via
V81 southbound.



REIL Rwy 4 **L**
REIL Rwy 22
MIRL Rwy 4-22 and 13-31 **L**

<div style="display: flex; justify-content: space-around; align-items: center;"> <div style="text-align: center;"> <p>5100</p> </div> <div style="text-align: center;"> <p>JEKUT</p> </div> </div>		<p>VGSI and descent angles not coincident (VGSI angle 3.50/TCH 54).</p>	
CATEGORY	A	B	C
LNAV MDA	3820-1	447 (500-1)	3820-1¼ 447 (500-1¼)
CIRCLING	3940-1	566 (600-1)	4160-2¼ 786 (800-2¼)
			D
			3820-1½ 447 (500-1½)
			4160-2½ 786 (800-2½)