

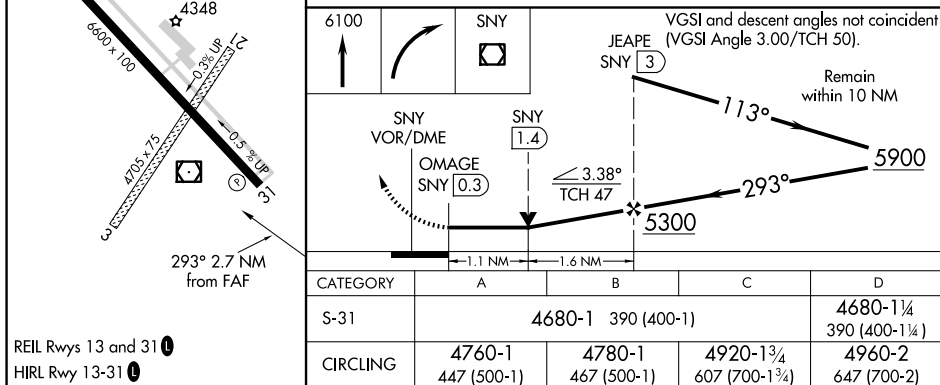
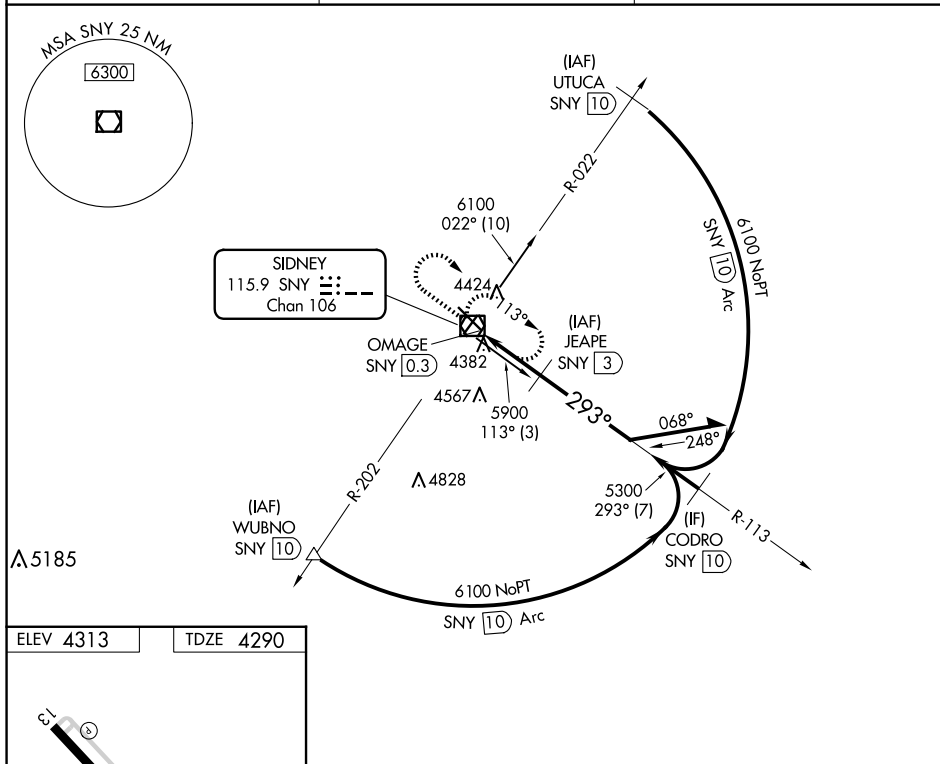
VOR/DME SNY <b>115.9</b> Chan <b>106</b>	APP CRS <b>293°</b>	Rwy Idg <b>6600</b> TDZE <b>4290</b> Apt Elev <b>4313</b>
--	------------------------	---

VOR/DME RWY 31  
SIDNEY MUNI/LLOYD W CARR FLD (SNY)

**T**  
**A** When local altimeter setting not received, use Kimball altimeter setting: increase all MDAs 160 feet and visibility Cats C and D ½ SM. VDP NA when using Kimball altimeter setting.

**MISSED APPROACH:** Climb to 6100 then right turn direct SNY VOR/DME and hold.

ASOS <b>125,775</b>	DENVER CENTER <b>118,475 225.4</b>	UNICOM <b>122.8</b> (CTAF) <b>0</b>
------------------------	---------------------------------------	--



SIDNEY, NEBRASKA  
Amdt 5C 25MAR21

SIDNEY MUNI/LLOYD W CARR FLD (SNY)  
VOR/DME RWY 31

41°06'N-102°59'W

NC-2, 07 AUG 2025 to 04 SEP 2025