
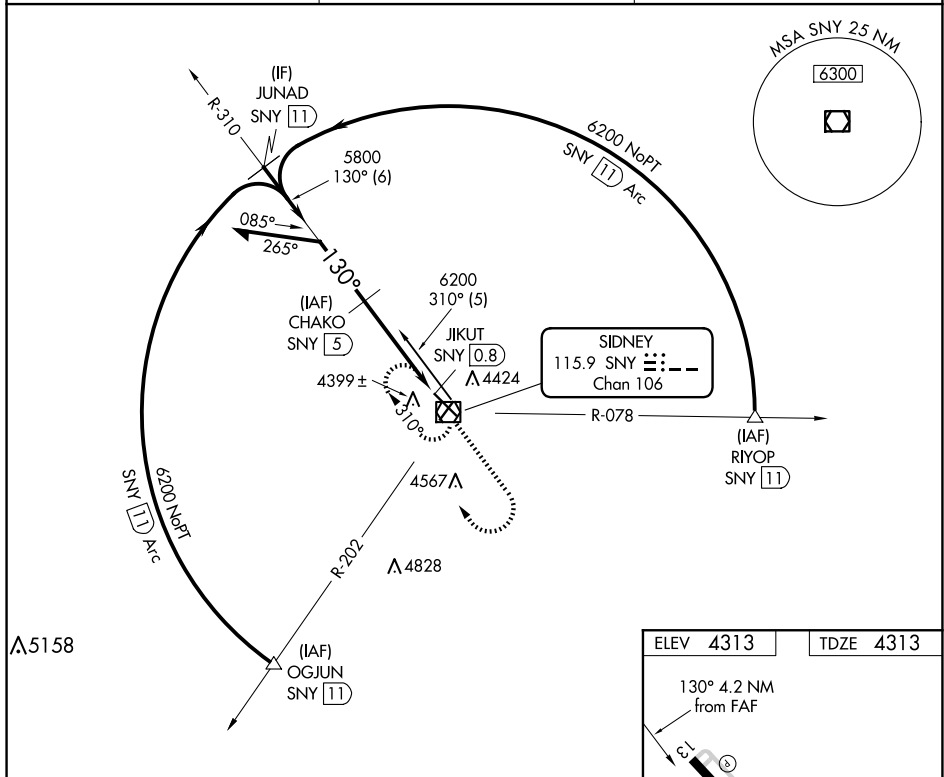


VOR/DME RWY 13
SIDNEY MUNI/LLOYD W CARR FLD (SNY)

- | | | |
|---|--|--|
|  | <p>VDP NA when using Kimball altimeter setting. When local altimeter setting not received, use Kimball altimeter setting; increase all MDAs 160 feet and visibility Cats C and D ½ SM.</p> | <p>MISSED APPROACH: Climb to 6200 then right turn direct SNY VOR/DME and hold.</p> |
|---|--|--|

ASOS 125.775	DENVER CENTER 118.475 225.4	UNICOM 122.8 (CTAF) 0
------------------------	---------------------------------------	---------------------------------



VGSI and descent angles not coincident
(VGSI Angle 3.00/TCH 45).

Remain within 10 NM

310°

130°

6200

5800

3.25°

TCH 44

3.1 NM

1.1 NM

1.9 NM

0.8 NM

SNY 1.9

JIKUT

SNY 0.8

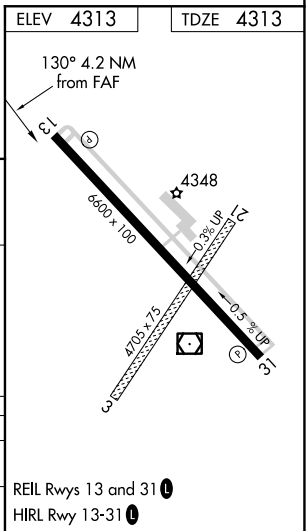
SNY VOR/DME

CHAKO SNY 5

6200

SNY

CATEGORY	A	B	C	D
S-13		4700-1 387 (400-1)		4700-1¼ 387 (400-1¼)
CIRCLING	4760-1 447 (500-1)	4780-1 467 (500-1)	4920-1¾ 607 (700-1¾)	4960-2 647 (700-2)



NC-2, 07 AUG 2025 to 04 SEP 2025