

WAAS CH 45730 W31A	APP CRS 307°	Rwy Idg 5200 TDZE 1195 Apt Elev 1201
--	------------------------	---

RNAV (GPS) RWY 31
WAUSAU DOWNTOWN (AUW)

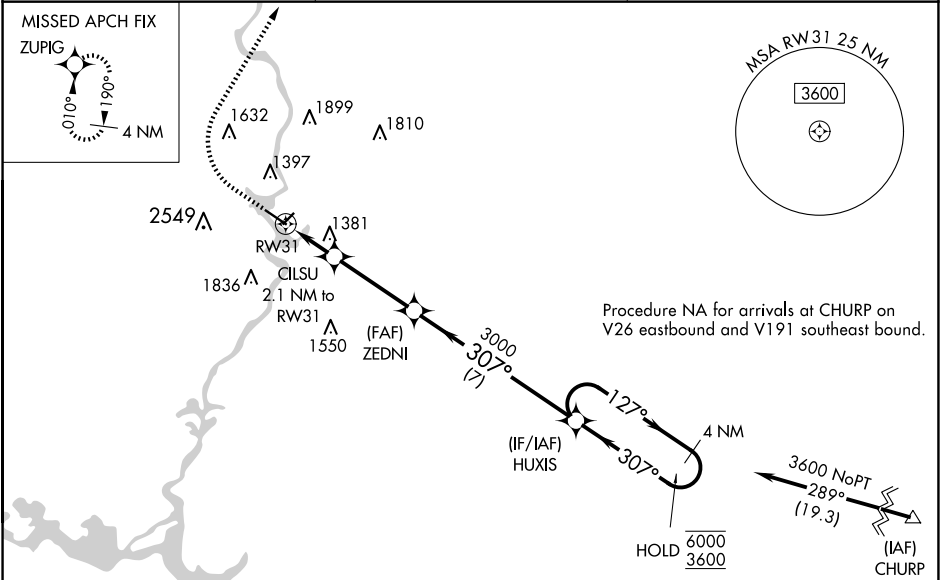
RNP APCH.

Circling NA to Rws 12W and 30W. Circling NA southwest of Rwy 13-31. For uncompensated Baro-VNAV systems, LNAV/VNAV NA below -21°C or above 54°C.

MISSED APPROACH: Climb to 1700 then climbing right turn to 4000 direct ZUPIG and hold.

** Missed approach requires minimum climb of 300 feet per NM to 2100.

ASOS 125.925	MINNEAPOLIS CENTER 124.4 317.7	UNICOM 122.7 (CTAF) 0
------------------------	--	---------------------------------



ELEV 1201

TDZE 1195

1700

4000

ZUPIG

CILSU

2.1 NM to RW31

ZEDNI

3000

HUXIS

4 NM Holding Pattern

*LNAV only.

*1.5 NM to RW31

*1900

3000

127°

307°

6000

3600

GP 3.00°

TCH 44

1.5 NM

0.6

3.4 NM

7 NM

CATEGORY	A	B	C	D
LPV DA	1445-7%		250 (300-7%)	
LNAV/VNAV DA	**1505-1		310 (400-1)	
LNAV/VNAV DA	1661-1 ⁵ %		466 (500-1 ⁵ %)	
LNAV MDA	1700-1 505 (500-1)		1700-1 ³ % 505 (500-1 ³ %)	
CIRCLING	1840-1 639 (700-1)		1960-2 759 (800-2) 2260-3 1059 (1100-3)	

REIL Rws 13 and 31 0

MIRL Rws 5-23 and 13-31 0

EC-3, 07 AUG 2025 to 04 SEP 2025

EC-3, 07 AUG 2025 to 04 SEP 2025