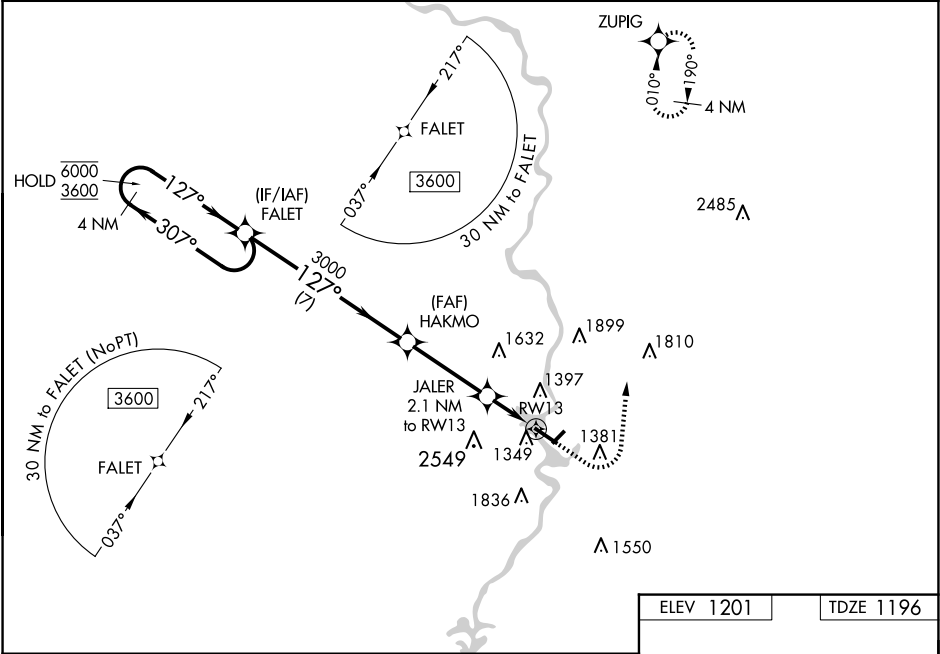


WAAS CH 90330 W13A	APP CRS 127°	Rwy Idg 5200 TDZE 1196 Apt Elev 1201
--	------------------------	---

RNAV (GPS) RWY 13
WAUSAU DOWNTOWN (A U W)

RNP APCH.	MISSED APPROACH: Climb to 1800 then climbing left turn to 4000 direct ZUPIG and hold.
<div><div>T</div><div>A</div></div> <div>Circling NA to Rwy 12W and 30W. Circling NA southwest of Rwy 13-31. For uncompensated Baro-VNAV systems, LNAV/VNAV NA below -17°C or above 54°C.</div>	

ASOS 125.925	MINNEAPOLIS CENTER 124.4 317.7	UNICOM 122.7 (CTAF) 0
------------------------	--	---------------------------------



4 NM Holding Pattern		FALET	HAKMO	JALER	RWY 13
6000 ← 307° 3600 → 127°		3000	3000	2.1 NM to RWY 13	1.1 NM to RWY 13
GP 3.00° TCH 43			*1900		
		7 NM	3.4 NM	1 NM	1.1 NM
CATEGORY	A	B	C	D	
LPV DA	1446-3/4		250 (300-3/4)		
LNAV/VNAV DA	1534-1 1/8		338 (400-1 1/8)		
LNAV MDA	1600-1	404 (400-1)	1600-1 1/8	404 (400-1 1/8)	
CIRCLING	1840-1	639 (700-1)	1960-2 1/4 759 (800-2 1/4)	2260-3 1059 (1100-3)	

