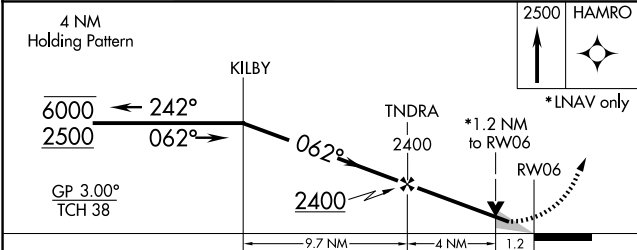
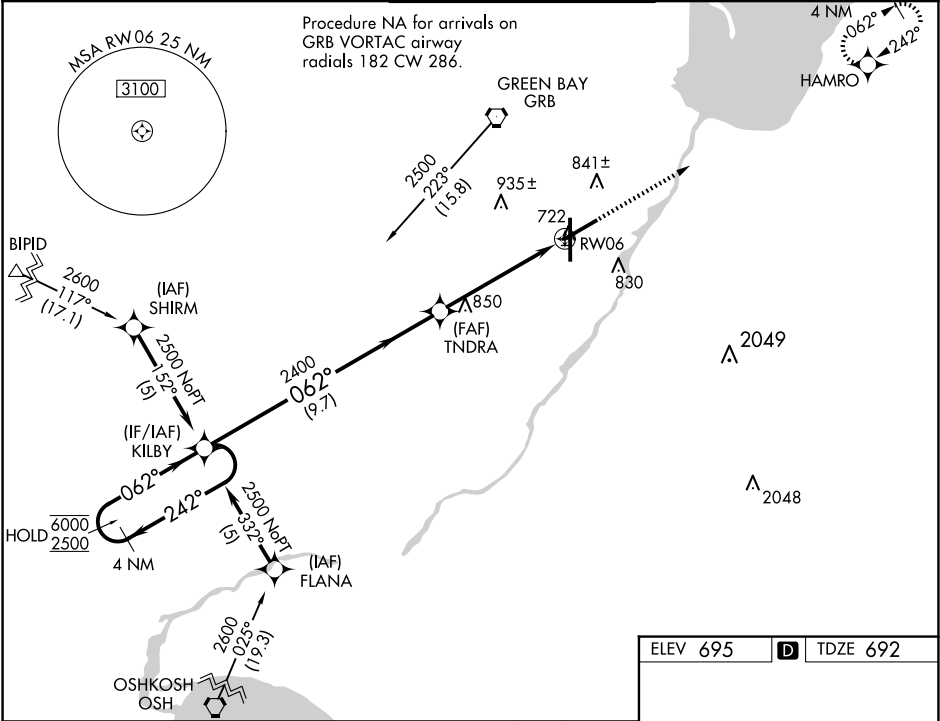


| | | |
|--|------------------------|---|
| WAAS CH 63015 W06A | APP CRS 062° | Rwy Idg 7699 TDZE 692 Apt Elev 695 |
|--|------------------------|---|

RNAV (GPS) RWY 6

GREEN BAY/AUSTIN STRAUBEL INTL (GRB)

| | | | | |
|--|--|--|---|---------------------------|
| RNP APCH. | | MALSR | MISSED APPROACH: Climb to 2500 direct HAMRO and hold. | |
| ▼ For uncompensated Baro-VNAV systems, LNAV/VNAV NA below -16°C or above 54°C. For inop ALS, increase LNAV/VNAV all Cats visibility to RVR 4500, and LNAV Cats C and D visibility to RVR 6000. **RVR 1800 authorized with use of FD or AP or HUD to DA | | ASR | | |
| ATIS 124.1 | GREEN BAY APP CON★ 119.4 338.2 | GREEN BAY TOWER ★ 118.7 (CTAF) 0 257.8 | GND CON 121.9 | CLNC DEL 121.75 |



| | | | | |
|--------------|---------|-------------|-------------------------|-----------------------|
| CATEGORY | A | B | C | D |
| LPV DA** | 892/24 | 200 (200-½) | | |
| LNAV/VNAV DA | 1000/24 | 308 (400-½) | 1000/40 | 308 (400-¾) |
| LNAV MDA | 1100/24 | 408 (500-½) | 1100/40 | 408 (500-¾) |
| CIRCLING | 1200-1 | 505 (600-1) | 1300-1¾ 605 (700-1½) | 1300-2 605 (700-2) |

