

WAAS CH 99515 W24A	APP CRS 242°	Rwy Idg 7699 TDZE 681 Apt Elev 695
--	------------------------	---

RNAV (GPS) RWY 24

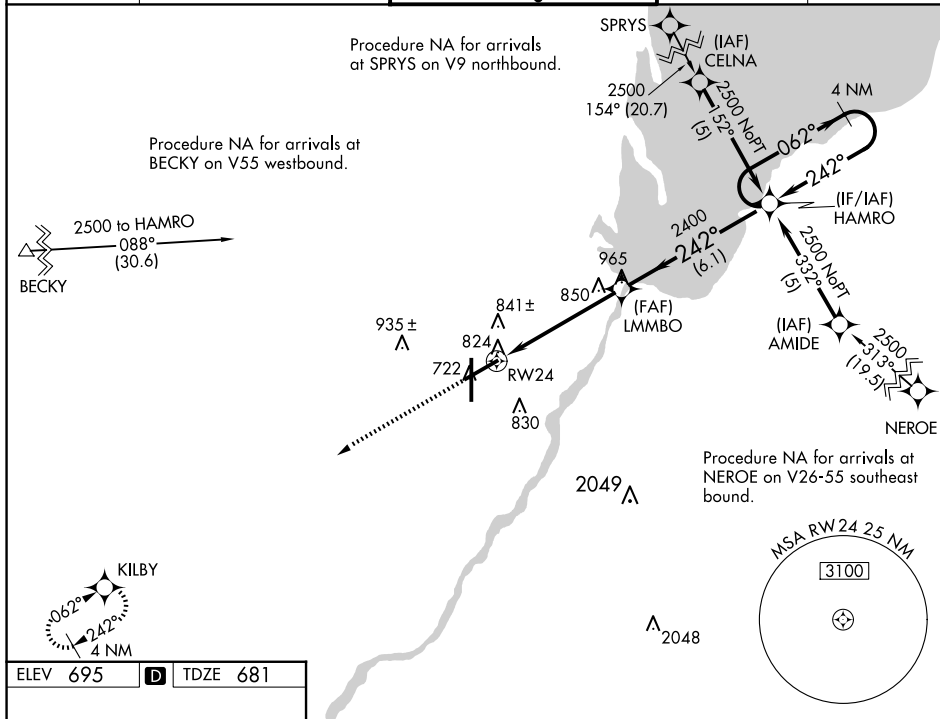
GREEN BAY/AUSTIN STRAUBEL INTL (GRB)

RNP APCH-GPS.

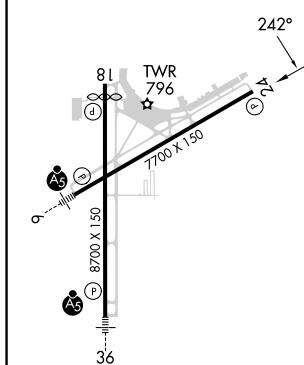
T For uncompensated Baro-VNAV systems, LNAV/VNAV
ASR NA below -16° C or above 54°C.

MISSED APPROACH: Climb to 2500 direct KILBY and hold.

ATIS 124.1	GREEN BAY APP CON ★ 119.4 338.2	GREEN BAY TOWER ★ 118.7 (CTAF) 0 257.8	GND CON 121.9	CLNC DEL 121.75
----------------------	---	--	-------------------------	---------------------------



ELEV 695	D	TDZE 681
----------	----------	----------



REIL Rwy 18 **L**
HIRL Rwy 6-24 and 18-36 **L**

GREEN BAY, WISCONSIN
Amdt 1B 12AUG21

2500 KILBY

* LNAV only

1.2 NM to RW24

1.2 NM

4 NM

6.1 NM

LMMBO

HAMRO

4 NM Holding Pattern

062°

242°

2500

GP 3.00° TCH 50

CATEGORY	A	B	C	D
LPV DA	970-1	289 (300-1)		
LNAV/VNAV DA	1143-1½	462 (500-1½)		
LNAV MDA	1100-1	419 (500-1)	1100-1¼	419 (500-1¼)
C CIRCLING	1200-1	505 (600-1)	1300-1¾ 605 (700-1¾)	1300-2 605 (700-2)

GREEN BAY/AUSTIN STRAUBEL INTL (GRB)

RNAV (GPS) RWY 24