

WAAS

CH **42802**

W18A

APP CRS

182°

Rwy Idg

8201

TDZE

695

Apt Elev

695

RNAV (GPS) RWY 18

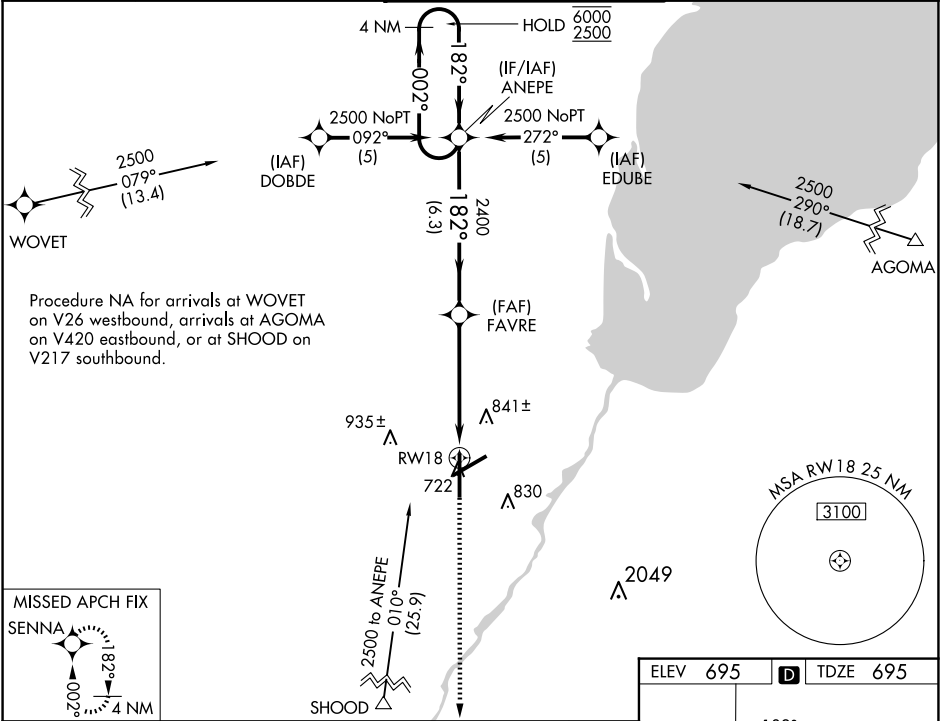
GREEN BAY/AUSTIN STRAUBEL INTL (GRB)

RNP APCH.

For uncompensated Baro-VNAV systems, LNAV/VNAV NA below ASR -16° C or above 54° C.

MISSED APPROACH: Climb to 2500 direct SENNA and hold.

ATIS 124.1	GREEN BAY APP CON* 119.4 338.2	GREEN BAY TOWER* 118.7 (CTAF) 0 257.8	GND CON 121.9	CLNC DEL 121.75
----------------------	--	---	-------------------------	---------------------------



4 NM Holding Pattern

VGSI and RNAV glidepath not coincident (VGSI angle 3.00/TCH 54).

2500 SENNA

ANEPE

FAVRE 2400

RW18

GP 3.00° TCH 50

*1.5 NM to RW18

*RNAV only

6.3 NM

3.6 NM

1.5 NM

CATEGORY	A	B	C	D
LPV DA	979-7 ⁷ / ₈		284 (300-7 ⁷ / ₈)	
LNAV/VNAV DA	1187-1 ³ / ₈		492 (500-1 ³ / ₈)	
LNAV MDA	1220-1	525 (600-1)	1220-1 ¹ / ₂	525 (600-1 ¹ / ₂)
CIRCLING	1220-1	525 (600-1)	1300-1 ³ / ₄ 605 (700-1 ³ / ₄)	1300-2 605 (700-2)

ELEV 695

TDZE 695

182°

81

TWR 796

7700 X 150

8700 X 150

36

HIRL Rwy 6-24 and 18-36

REIL Rwy 18