

|               |         |          |      |
|---------------|---------|----------|------|
| LOC/DME I-GRB | APP CRS | Rwy Idg  | 7699 |
| 109.5         | 242°    | TDZE     | 682  |
| Chan 32       |         | Apt Elev | 695  |

LOC BC RWY 24

GREEN BAY/AUSTIN STRAUBEL INTL (GRB)

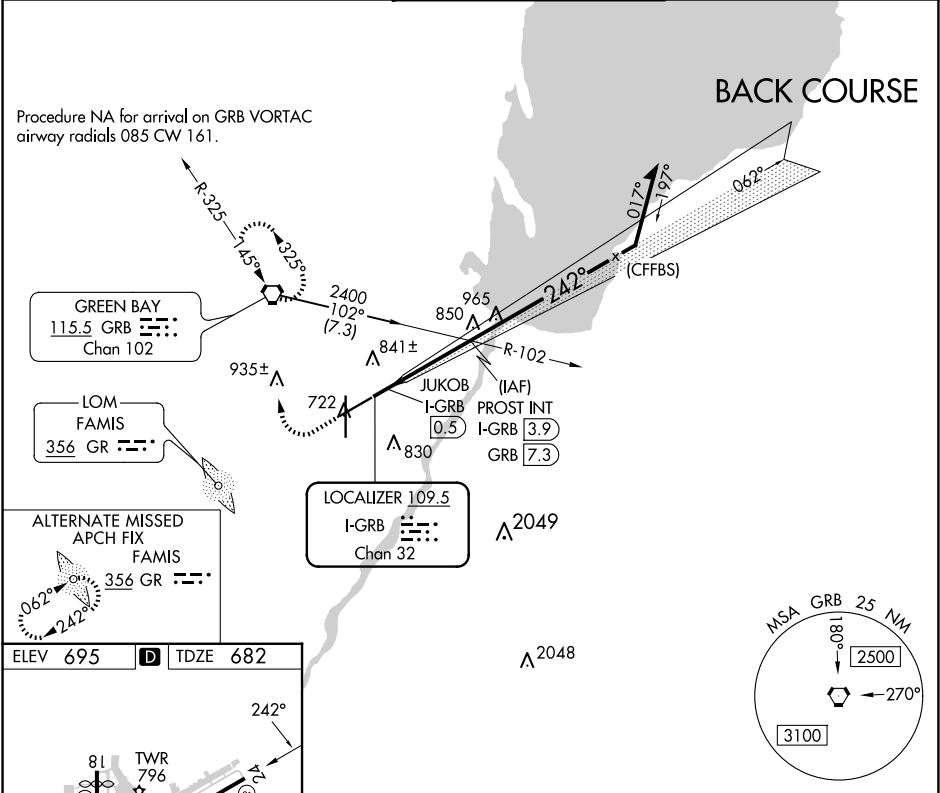
⚠

⚠

ASR

MISSED APPROACH: Climb to 1500 then climbing right turn to 2500 direct GRB VORTAC and hold.

|       |                    |                    |         |          |
|-------|--------------------|--------------------|---------|----------|
| ATIS  | GREEN BAY APP CON★ | GREEN BAY TOWER★   | GND CON | CLNC DEL |
| 124.1 | 119.4 338.2        | 118.7 (CTAF) 257.8 | 121.9   | 121.75   |



ELEV 695 TDZE 682

81

TWR 796

7700 X 150

8700 X 150

36

REIL Rwy 18

HIRL Rwys 6-24 and 18-36

FAF to MAP 3.4 NM

Knots

60

90

120

150

180

Min:Sec

3:24

2:16

1:42

1:21

1:08

|   |                    |     |                      |                     |
|---|--------------------|-----|----------------------|---------------------|
| 1500  | 2500               | GRB | PROST INT I-GRB 3.9  | Remain within 10 NM |
| Disregard GS indications.   |                    |     |                      |                     |
| <div><div>JUKOB I-GRB 0.5</div><div>3.14°</div><div>TCH 50</div><div>2100</div><div>Use I-GRB DME when on the localizer course.</div></div> |                    |     |                      |                     |
| 0.7 3.4 NM  |                    |     |                      |                     |
| CATEGORY  | A                  | B   | C                    | D                   |
| S-24  | 1100-1 418 (500-1) |     | 1100-1½ 418 (500-1½) |                     |
| CIRCLING  | 1200-1 505 (600-1) |     | 1300-1¾ 605 (700-1¾) | 1300-2 605 (700-2)  |

EC-3, 07 AUG 2025 to 04 SEP 2025

EC-3, 07 AUG 2025 to 04 SEP 2025