

23222

ILS or LOC RWY 36  
GREEN BAY/AUSTIN STRAUBEL INTL (GRB)

**MISSED APPROACH:** Climb to 1400 then climbing left turn to 2500 direct GRB VORTAC and hold.

GREEN BAY  
115.5 GRB  
Chan 102

R-325

145°

325°

3100

163°

(6)

FAMIS

356 GR

062°

242°

ALTERNATE  
MISSED APCH FIX

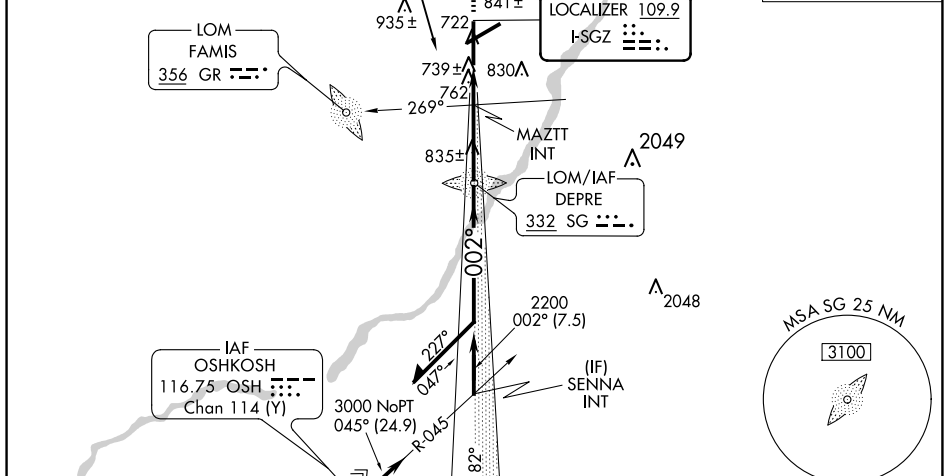


Diagram illustrating the layout of a 1000' wide runway and associated approach paths. Key features include:

- Runway width: 1000'
- Approach paths: S-ILS 36, S-LOC 36, MAZTT INT, MAZTT FIX.
- Angles: 182°, 002°, 1200°.
- Note: "Remain within 10 NM"
- Scale: 1.5 NM, 2.8 NM.
- Note: "GS 3.00° TCH 50"

GREEN BAY/AUSTIN STRAUBEL INTL (GRB)  
W ILS or LOC RWY 36

EC-3, 07 AUG 2025 to 04 SEP 2025