

VORTAC LFK <u>112.1</u> Chan 58	APP CRS 332°	Rwy Idg 4204 TDZE 286 Apt Elev 296
---	------------------------	---

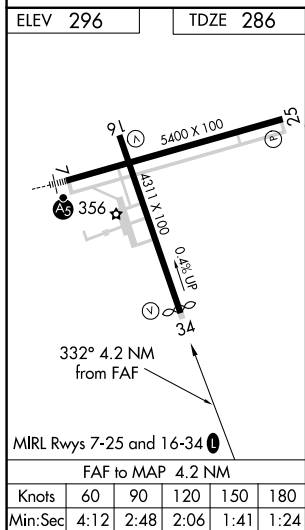
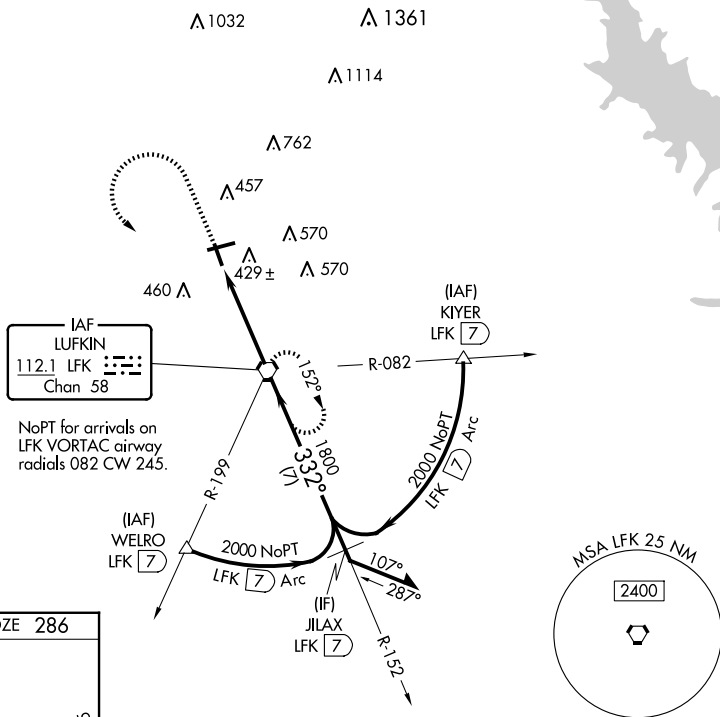
VOR RWY 34
ANGELINA COUNTY (LFK)

T
A

Rwy 34 helicopter visibility reduction below 1 SM NA.
Straight-In Rwy 34 NA at night, Circling to Rwy 16, 25, 34 NA at night.

MISSED APPROACH: Climb to 900 then climbing left turn to 2000 direct LFK VORTAC and hold.

ASOS 120.625	HOUSTON CENTER 125.175 285.575	UNICOM 123.0 (CTAF) 0
------------------------	--	---------------------------------



900
↑

2000
↘

LFK
⬡

VGSi and descent angles not coincident
(VGSi Angle 3.00/TCH 55).

LFK
4.2

152°

2000

332°

1800

3.34°
TCH 55

4.2 NM

Remain within 10 NM

CATEGORY	A	B	C	D
S-34	680-1	394 (400-1)	680-1½	394 (400-1½)
C CIRCLING	740-1 444 (500-1)	760-1 464 (500-1)	880-1½ 584 (600-1½)	1140-2¾ 844 (900-2¾)