

WAAS CH 50105 W07A	APP CRS 073°	Rwy Idg TDZE 287 Apt Elev 296
--	------------------------	---

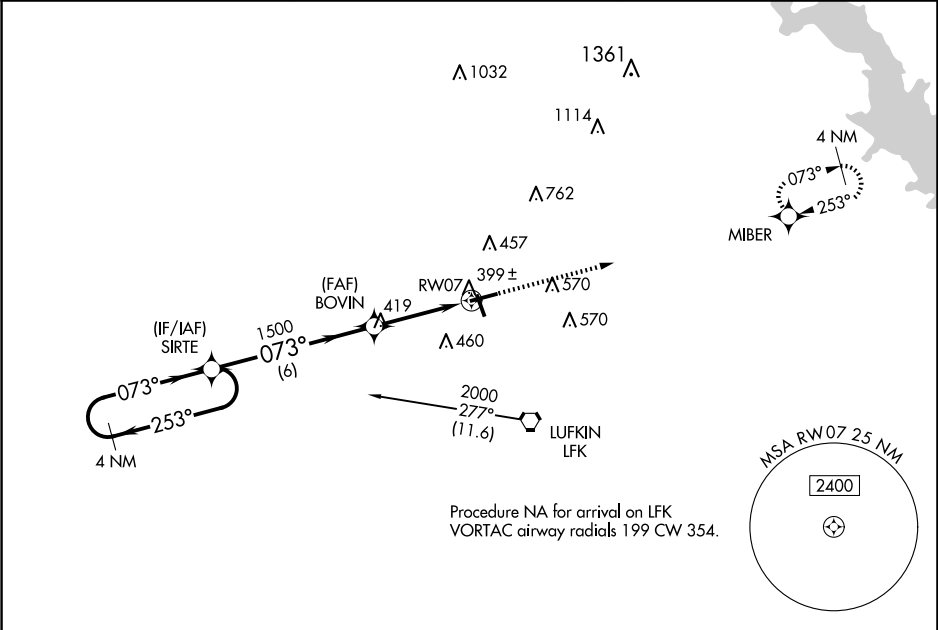
RNAV (GPS) RWY 7
ANGELINA COUNTY (L^UFK)

▼ For uncompensated Baro-VNAV systems, LNAV/VNAV NA below -4°C (25°F) or above 54°C (130°F). DME/DME RNP-0.3 NA. Circling Rwy 16, 25 NA at night.

▲ MALSR

MISSED APPROACH: Climb to 2000 direct MIBER and hold.

ASOS 120.625	HOUSTON CENTER 125.175 285.575	UNICOM 123.0 (CTAF) 0
------------------------	--	---------------------------------



					ELEV 296		TDZE 287		
<div>4 NM Holding Pattern</div> <div>SIRTE</div> <div>2000 ← 253° 073° →</div> <div>GP 3.00° TCH 50</div>					<div>2000</div> <div>MIBER</div> <div>*LNAV only.</div>			<div></div>	
<div>6 NM</div> <div>2.7 NM</div> <div>1 NM</div>									
CATEGORY	A	B	C	D					
LPV DA	537-½ 250 (300-½)								
LNAV/VNAV DA	563-½ 276 (300-½)								
LNAV MDA	660-½ 373 (400-½)		660-⅝ 373 (400-⅝)						
CIRCLING	740-1 444 (500-1)	760-1 464 (500-1)	880-1½ 584 (600-1½)	1140-2¾ 844 (900-2¾)					
MIRL Rwy 7-25 and 16-34									

SC-5, 07 AUG 2025 to 04 SEP 2025

SC-5, 07 AUG 2025 to 04 SEP 2025