


LOC I-EEN <u>108.9</u>	APP CRS 018°	Rwy Ldg 6201 TDZE 488 Apt Elev 488
----------------------------------	------------------------	---

ILS or LOC RWY 2
DILLANT/HOPKINS (EEN)

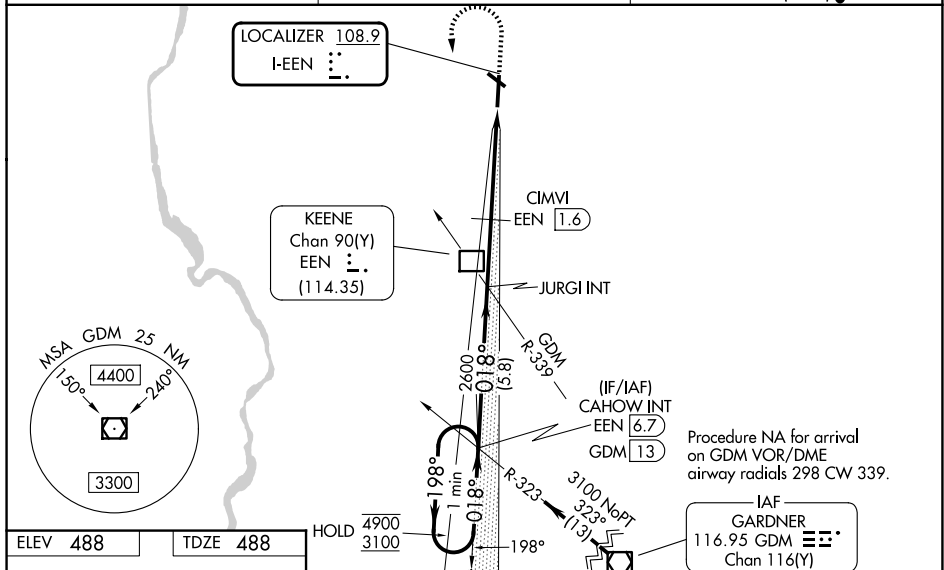
DME required for LOC only.

 Circling Rwy 32 NA at night. Rwy 2 helicopter visibility reduction below $\frac{3}{4}$ SM NA. Inop table does not apply to S-LOC 2 Cat C, S-LOC 2 Cats C/D and CIMVI fix minimums S-LOC 2 Cat A. For inop ALS, increase S-LOC 2 Cat A visibility to $\frac{1}{4}$ SM and increase CIMVI fix minimums S-LOC 2 Cat B visibility to $\frac{1}{4}$ SM and Cat C/D visibility to $\frac{2}{5}$ SM. When local altimeter setting not received, use ORE altimeter setting and increase S-LOC 2 DA to 914; increase all MDAs 60 feet and increase CIMVI fix minimums S-LOC 2 Cats C and D visibility $\frac{1}{8}$ SM. Inop table does not apply to S-LOC 2 Cats C/D when using ORE altimeter setting. For inop ALS when using ORE altimeter setting, increase S-LOC 2 Cat A visibility to $\frac{1}{4}$ SM and increase CIMVI fix minimums S-LOC 2 Cats A/B visibility to $\frac{1}{4}$ SM. VDP NA when using ORE altimeter setting. DME from EEN DME. DME use requires simultaneous reception of I-EN and EEN DME.

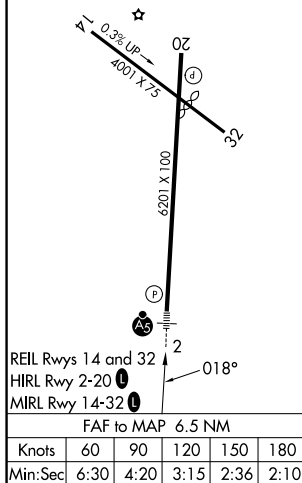
MALS®

MISSED APPROACH:
Climb to 1540 then
climbing left turn to
3100 on heading
200° and GDM
VOR/DME R-323 to
CAHOW INT/GDM
VOR/DME 13 DME
and hold.

AWOS-3PT 119.025	BOSTON CENTER 123.75 338.2	UNICOM 123.0 (CTAF) 0
----------------------------	--------------------------------------	---------------------------------



ELEV 488		TDZE 488
----------	--	----------



One Minute Holding Pattern

CAH OW INT
EEN 6.7

JURGI INT

1540 3100
hdg 200°

GDM R-323

CAH OW INT

4900 ← 198°
3100 018° → 018°

GS 3.00°
TCH 43°

VGSI and ILS glidepath not coincident
(VGSI Angle 3.00/TCH 39°)

2600

EEN DME

CIMVI

EEN 1.6

EEN 3.2

EEN 5.7

1840

5.8 NM 2.4 NM 1.6 2.5

CATEGORY	A	B	C	D
S-ILS 02	860-1 372 (400-1)			
S-LOC 02	1840-1	1352 (1400-1)	1840-3	1352 (1400-3)
CIRCLING	1840-1¼ 1352 (1400-1¼)	1840-1½ 1352 (1400-1½)	1840-3 1352 (1400-3)	1980-3 1492 (1500-3)
CIMVI FIX MINIMUMS (DME REQUIRED)				
S-LOC 02	1320-1	832 (900-1)	1320-1½	832 (900-1½)
CIRCLING	1420-1¼ 932 (1000-1¼)	1480-1½ 992 (1000-1½)	1760-3 1272 (1300-3)	1980-3 1492 (1500-3)

KEENE, NEW HAMPSHIRE
Amdt 6A 31OCT24

42°54'N-72°16'W

DILLANT/HOPKINS (EEN)
ILS or LOC RWY 2