

WAAS CH 61305 W35A	APP CRS 356°	Rwy Idg 6201 TDZE 712 Apt Elev 717
--	------------------------	---

RNAV (GPS) RWY 35

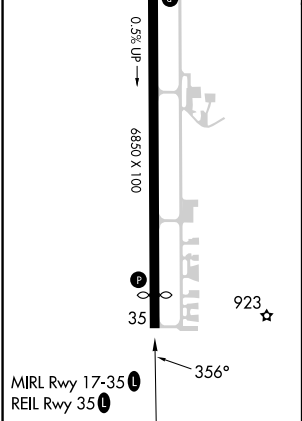
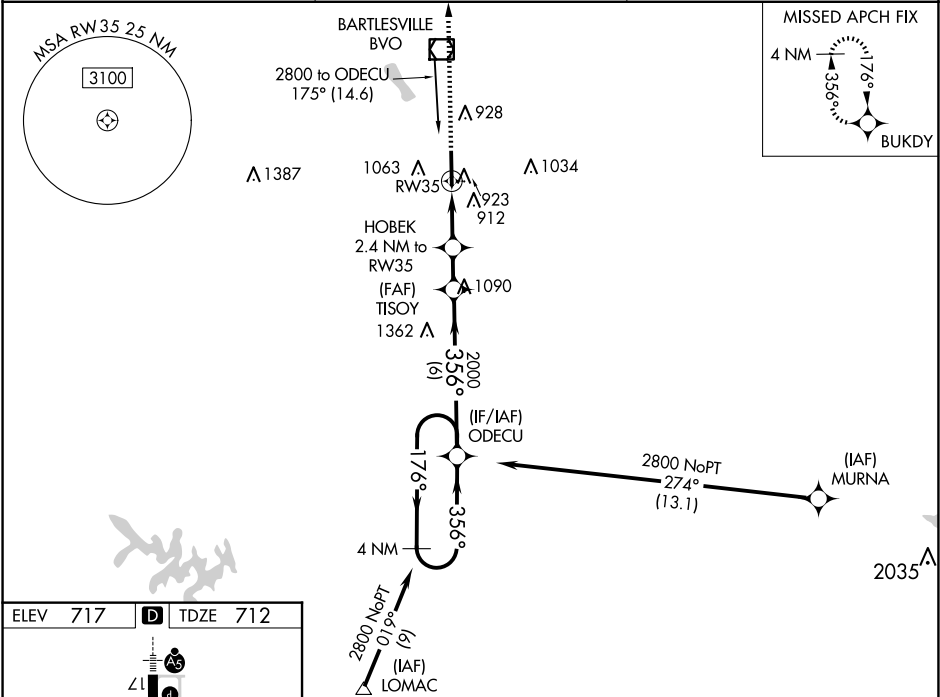
BARTLESVILLE MUNI (BVO)

⚠

For uncompensated Baro-VNAV systems, LNAV/VNAV NA below -18°C (0°F) or above 54°C (130°F). DME/DME RNP-0.3 NA. When local altimeter setting not received, use Tulsa Intl altimeter setting and increase all DA 85 feet and all MDA 100 feet, increase LPV all Cats visibility ¼ mile, LNAV/VNAV all Cats visibility ⅓ mile, LNAV and Circling Cat C visibility ¼ mile. Circling NA east of Rwy 17-35. Baro-VNAV and VDP NA when using Tulsa Intl altimeter setting. Helicopter visibility reduction below ¾ SM NA.

MISSED APPROACH:
Climb to 3100 direct
BUKDY and hold.

ASOS 132.675	KANSAS CITY CENTER 128.6 282.325	CTAF 122.825
------------------------	--	------------------------



3100	BUKDY	HOBEB 2.4 NM to RW35	TISOY 2000	ODECU	4 NM Holding Pattern
*LNAV only.	*1.3 NM to RW35				GP 3.00° TCH 45
1.3 NM	1.1 NM	1.5 NM	6 NM		
CATEGORY	A	B	C	D	
LPV DA	968-7/8	256 (300-7/8)		NA	
LNAV/VNAV DA	1161-1½	449 (500-1½)		NA	
LNAV MDA	1180-1	468 (500-1)	1180-1¾ 468 (500-1¾)	NA	
CIRCLING	1380-1	663 (700-1)	1400-2 683 (700-2)	NA	

SC-1, 07 AUG 2025 to 04 SEP 2025

SC-1, 07 AUG 2025 to 04 SEP 2025