

⚠

For uncompensated Baro-VNAV systems, LNAV/VNAV NA below -18°C (0°F) or above 54°C (130°F). DME/DME RNP-0.3 NA. When local altimeter setting not received, use Tulsa Intl altimeter setting and increase all DA 85 feet and all MDA 100 feet, increase LPV all Cats, LNAV/VNAV all Cats, LNAV and Circling Cat C visibility ¼ mile. Inop table does not apply to LPV all Cats. For inop MALSR, increase LNAV Cat A/B visibility to 1 mile. For inop MALSR when use Tulsa Intl altimeter setting, increase LNAV/VNAV all Cats visibility to 2½ mile, and LNAV Cat A/B visibility to 1 mile. Circling NA east of Rwy 17-35. Baro-VNAV and VDP NA when using Tulsa Intl altimeter setting. Helicopter visibility reduction below ¾ SM NA.

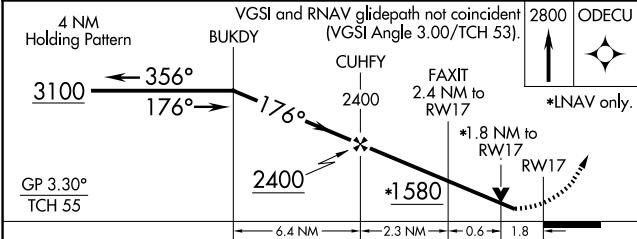
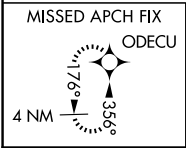
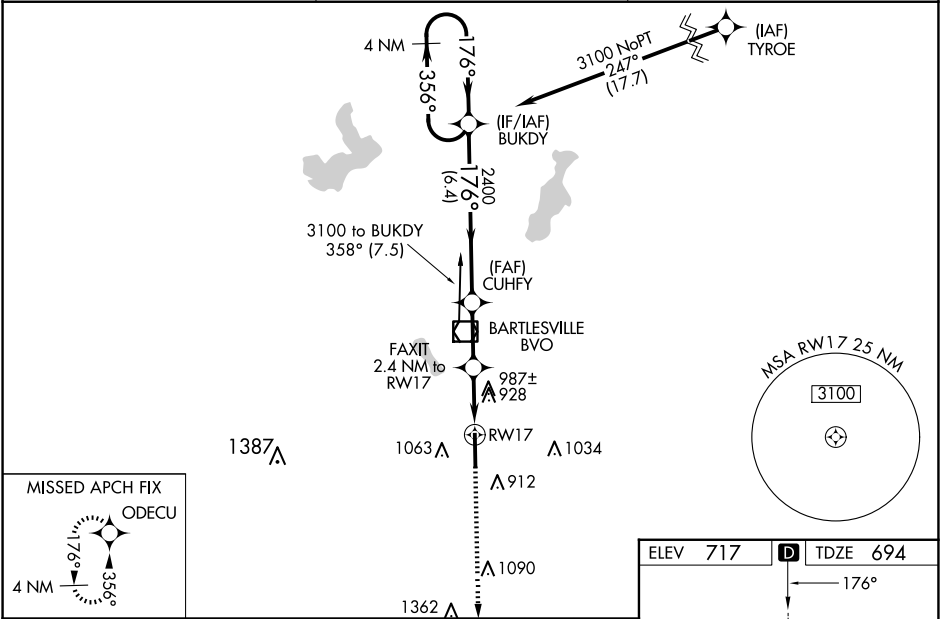
MALSR

AS

176°

MISSED APPROACH:
Climb to 2800 direct
ODECU and hold.

| | | |
|-----------------|-------------------------------------|-----------------|
| ASOS 132.675 | KANSAS CITY CENTER 128.6 282.325 | CTAF 122.825 |
|-----------------|-------------------------------------|-----------------|



| CATEGORY | A | B | C | D |
|--------------|----------------------|---|----------------------|----|
| LPV DA | 906-¾ 212 (200-¾) | | 944-¾ 250 (300-¾) | NA |
| LNAV/VNAV DA | 1317-1½ 623 (700-1½) | | | NA |
| LNAV MDA | 1240-¾ 546 (600-¾) | | 1240-1⅛ 546 (600-1⅛) | NA |
| CIRCLING | 1380-1 663 (700-1) | | 1400-2 683 (700-2) | NA |

