

| | | |
|--|------------------------|---|
| WAAS CH 45903 W04A | APP CRS 036° | Rwy Ldg TDZE 40 Apt Elev 42 |
|--|------------------------|---|

RNAV (GPS) RWY 4R

LAFAYETTE RGNL/PAUL FOURNET FLD (LFT)

RNP APCH.

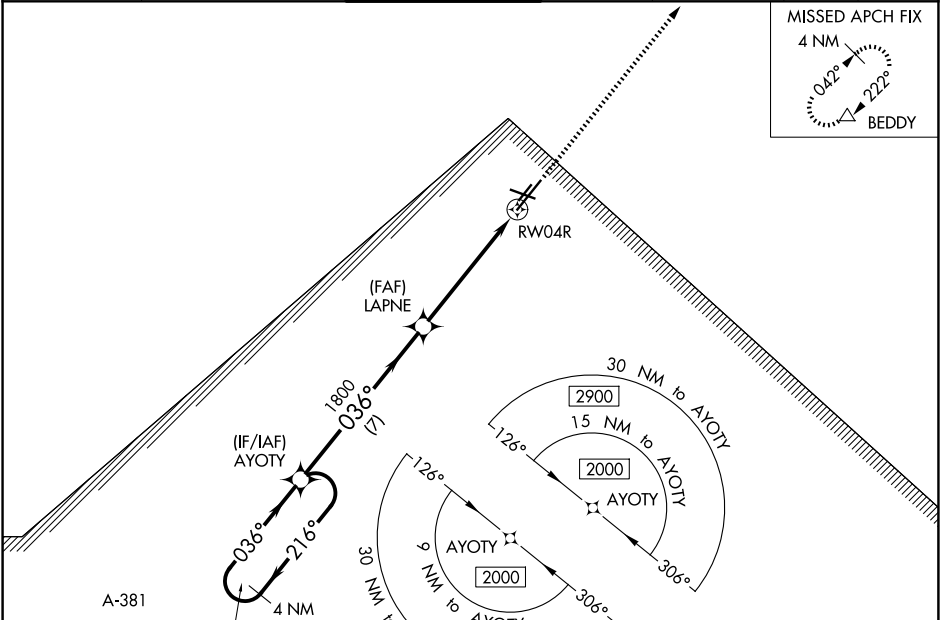
▼

▲

Rwy 4R helicopter visibility reduction below ¾ SM NA.
For uncompensated Baro-VNAV systems, LNAV/VNAV NA below -2°C or above 54°C.

MISSED APPROACH: Climb to 2000 direct BEDDY and hold.

| | | | | | |
|-----------------------|---|--|-------------------------|---------------------------|-------------------------|
| ATIS 134.05 | LAFAYETTE APP CON ★ 121.1 363.0 | LAFAYETTE TOWER ★ 118.5 (CTAF) 257.8 | GND CON 121.8 | CLNC DEL 125.55 | UNICOM 122.95 |
|-----------------------|---|--|-------------------------|---------------------------|-------------------------|



ELEV 42 TDZE 40

REIL Rwys 4L, 4R, 11, 22R and 29
MIRL Rwy 11-29 and 4L-22R
HIRL Rwys 4R-22L

4 NM Holding Pattern AYOTY

GP 3.00° TCH 49

2000 BEDDY

* LNAV only.

1.3 NM to RWY 04R

7 NM 4.1 NM 1.3

| CATEGORY | A | B | C | D |
|--------------|----------------------|----------------------|------------------------------|----------------------|
| LPV DA | | 317-7/8 | 277 (300-7/8) | |
| LNAV/VNAV DA | | 440-1 1/8 | 400 (400-1 1/8) | |
| LNAV MDA | 500-1 | 460 (500-1) | 500-1 3/8 | 460 (500-1 3/8) |
| CIRCLING | 500-1 458 (500-1) | 580-1 538 (600-1) | 700-1 3/4 658 (700-1 3/4) | 700-2 658 (700-2) |

409° X 75

5400 X 148

800 X 150

TWR

4L

4R

29

22L

036°

SC-4, 07 AUG 2025 to 04 SEP 2025

SC-4, 07 AUG 2025 to 04 SEP 2025