

WAAS CH 50503 W22A	APP CRS 216°	Rwy Ldg TDZE 38 Apt Elev 42
--	------------------------	---

RNAV (GPS) RWY 22L

LAFAYETTE RGNL/PAUL FOURNET FLD (L.F'T)

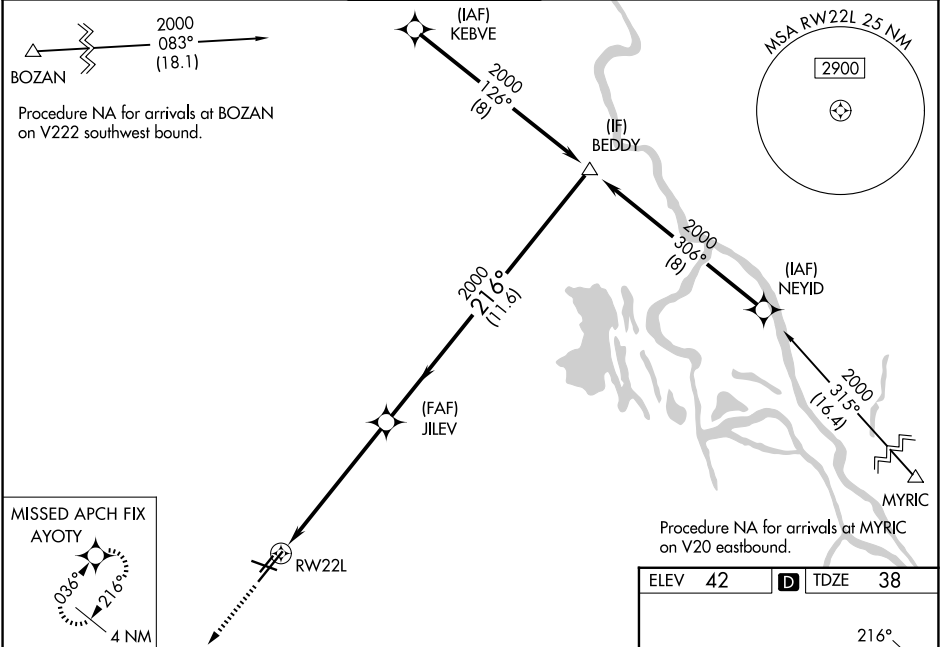
RNP APCH.

⚠ For uncompensated Baro-VNAV systems, LNAV/VNAV NA below -15°C (5°F) or above 54°C (130°F). VDP NA with Acadiana Rgnl altimeter setting. When local altimeter setting not received, use Acadiana Rgnl altimeter setting and increase all DA 29 feet and all MDA 40 feet; increase LNAV/VNAV visibility all Cats to RVR 3500, increase Circling visibility Cat C/D ¼ SM. For inop MALS, increase LNAV Cats C and D visibility ¾ mile. For inop MALS, when using Acadiana Rgnl altimeter setting, increase LNAV/VNAV all Cats visibility to RVR 6000. Baro-VNAV NA when using Acadiana Rgnl altimeter setting.

MALS

⚠ MISSED APPROACH: Climb to 2000 direct AYOTY and hold.

ATIS 134.05	LAFAYETTE APP CON * 121.1 363.0	LAFAYETTE TOWER * 118.5 (CTAF) 0 257.8	GND CON 121.8	CLNC DEL 125.55	UNICOM 122.95
-----------------------	---	--	-------------------------	---------------------------	-------------------------



2000 AYOTY

VGSI and RNAV glidepath not coincident (VGSI Angle 3.00/TCH 50).

*LNAV only.

1.2 NM to RW22L

JILEV 2000

BEDDY 2000

GP 3.00° TCH 54

1.2 NM 4.8 NM 11.6 NM

CATEGORY	A	B	C	D
LPV DA	238/24		200 (200-½)	
LNAV/VNAV DA	349/24		311 (400-½)	
LNAV MDA	480/24	442 (500-½)	480/45	442 (500-¾)
CIRCLING	540-1 498 (500-1)	580-1 538 (600-1)	700-1¾ 658 (700-1¾)	700-2 658 (700-2)

ELEV 42	TDZE 38
---------	---------

REIL Rwy 4L, 4R, 11, 22R and 29
MRL Rwy 11-29 and 4L-22R
HRL Rwy 4R-22L

SC-4, 07 AUG 2025 to 04 SEP 2025

SC-4, 07 AUG 2025 to 04 SEP 2025