

| | | | |
|---|------------------------|---|---|
| LOC/DME I-LFT 109.5 Chan 32 | APP CRS 216° | Rwy Ldg 7659 TDZE 38 Apt Elev 42 | ILS or LOC RWY 22L LAFAYETTE RGNL/PAUL FOURNET FLD (L.F.T) |
|---|------------------------|---|---|

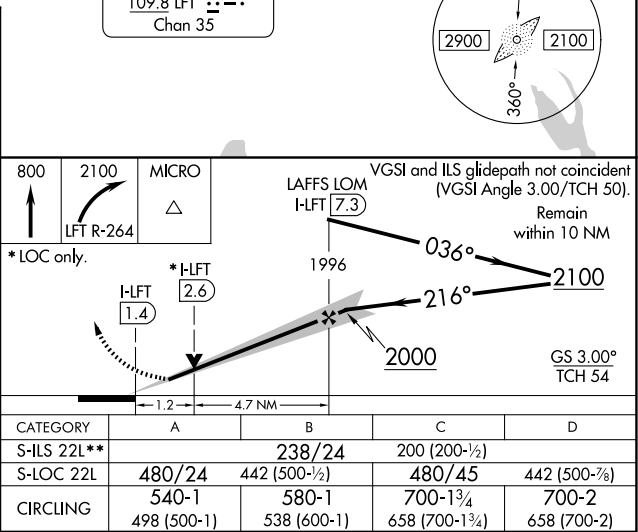
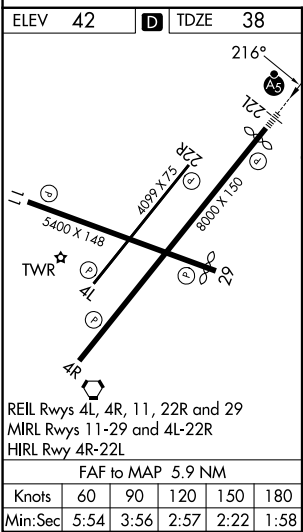
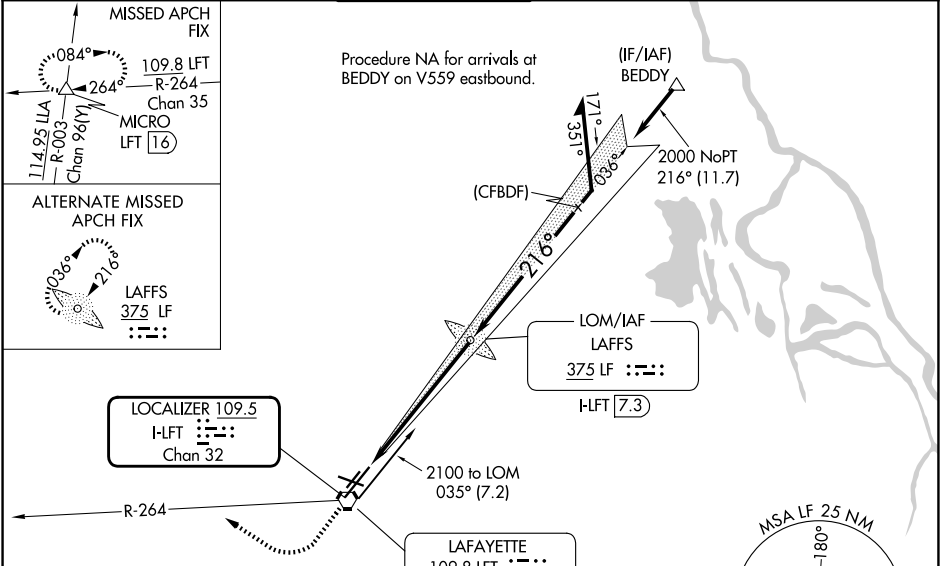
⚠ VDP NA with Acadiana Rgnl altimeter setting. When local altimeter setting not received, use Acadiana Rgnl altimeter setting and increase DA to 267 feet; increase all MDA 40 feet and S-LOC 22L visibility Cat C/D to RVR 5000 and Circling visibility Cat C/D ¼ SM. For inop MALSR when using Acadiana Rgnl altimeter setting, increase S-LOC 22L Cat C and D visibility to 1½ mile.

****RVR 1800 authorized with use of FD or AP or HUD to DA (NA when using Acadiana Rgnl altimeter setting).**

MALSR
A5

MISSED APPROACH:
Climb to 800 then climbing right turn to 2100 on LFT VORTAC R-264 to MICRO INT/ LFT 16 DME and hold.

| | | | | | |
|-----------------------|---|--|-------------------------|---------------------------|-------------------------|
| ATIS 134.05 | LAFAYETTE APP CON ★ 121.1 363.0 | LAFAYETTE TOWER ★ 118.5 (CTAF) 0 257.8 | GND CON 121.8 | CLNC DEL 125.55 | UNICOM 122.95 |
|-----------------------|---|--|-------------------------|---------------------------|-------------------------|



SC-4, 07 AUG 2025 to 04 SEP 2025

SC-4, 07 AUG 2025 to 04 SEP 2025