

QUINCY, ILLINOIS

AL-862 (FAA)

25051

WAAS CH 61210 W31A	APP CRS 313°	Rwy Idg 5146 TDZE 769 Apt Elev 769
--	------------------------	---

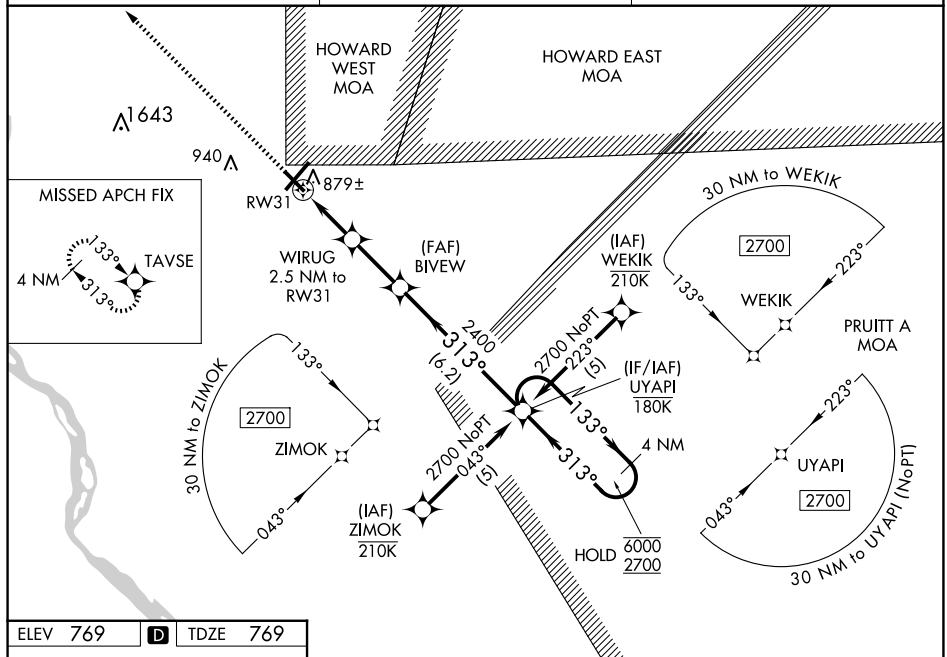
RNAV (GPS) RWY 31
QUINCY RGNL-BALDWIN FLD (UIN)

RNP APCH.

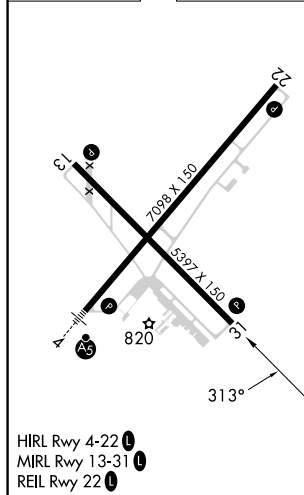
T For uncompensated Baro-VNAV systems, LNAV/VNAV NA below -16° C or
A above 54° C.

MISSED APPROACH:
Climb to 2700 direct
TAVSE and hold.

ASOS 121.425	KANSAS CITY CENTER 126.225 317.775	UNICOM 123.0 (CTAF) 0
------------------------	--	---------------------------------



ELEV 769	D	TDZE 769
----------	----------	----------



<div style="display: flex; justify-content: space-around; align-items: center;"> <div style="text-align: center;"> <div style="border: 1px solid black; padding: 2px;">2700</div> <div style="font-size: 2em;">↑</div> </div> <div style="text-align: center;"> <div style="border: 1px solid black; padding: 2px;">TAVSE</div> </div> </div>		<div style="display: flex; justify-content: space-between; align-items: flex-start;"> <div> <p>* LNAV only.</p> <p>RW31</p> <p>*1 NM to RW31</p> <p>1 NM</p> </div> <div> <p>WIRUG</p> <p>2.5 NM to RW31</p> <p>1.5 NM</p> </div> <div> <p>BIVEW</p> <p>2400</p> <p>*1600</p> <p>2400</p> <p>6.2 NM</p> </div> <div> <p>UYAPI</p> <p>4 NM Holding Pattern</p> <p>133° →</p> <p>← 313°</p> <p>6000</p> <p>2700</p> <p>GP 3.00°</p> <p>TCH 40</p> </div> </div>			
CATEGORY		A	B	C	D
LPV	DA	1057-1 288 (300-1)			
LNAV/ VNAV	DA	1168-1½ 399 (400-1½)			
LNAV	MDA	1140-1 371 (400-1)			1140-1½ 371 (400-1½)
CIRCLING		1180-1 411 (500-1)	1220-1 451 (500-1)	1240-1½ 471 (500-1½)	1320-2 551 (600-2)

QUINCY, ILLINOIS
Orig-A 31DEC20

39°57'N-91°12'W

QUINCY RGNL-BALDWIN FLD (UIN)
RNAV (GPS) RWY 31

EC-3, 07 AUG 2025 to 04 SEP 2025

EC-3, 07 AUG 2025 to 04 SEP 2025