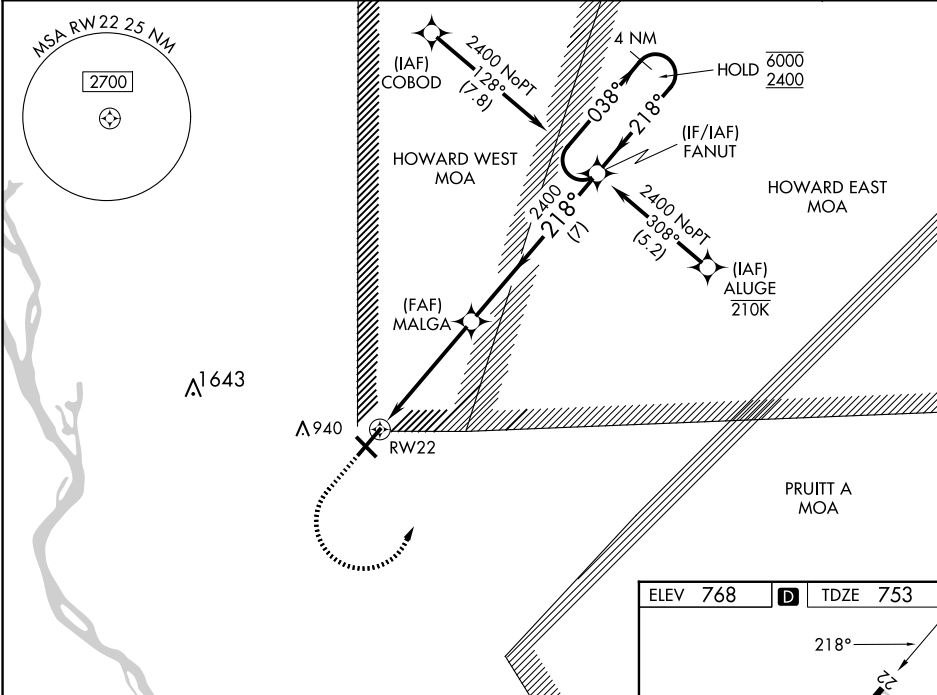


WAAS CH <b>45705</b> <b>W22A</b>	APP CRS <b>218°</b>	Rwy Idg TDZE Apt Elev	<b>7098</b> <b>753</b> <b>768</b>
--	------------------------	-----------------------------	---

RNAV (GPS) RWY 22  
QUINCY RGNL-BALDWIN FLD (UIN)

RNP APCH - GPS.	
▼ ▲ For uncompensated Baro-VNAV systems, LNAV/VNAV NA below -21°C or above 54°C. Baro-VNAV and VDP NA when using Pittsfield altimeter setting. When local altimeter setting not received, use Pittsfield altimeter setting and increase LPV DA to 1073 feet and all visibilities ½ SM. Increase LNAV/VNAV DA to 1120 feet and all visibilities ½ SM. Increase all MDAs 80 feet and LNAV visibility Cat C/D ½ SM.	MISSED APPROACH: Climb to 1300 then climbing left turn to 2400 direct FANUT and hold.

ASOS <b>121.425</b>	KANSAS CITY CENTER <b>126.225 317.775</b>	UNICOM <b>123.0 (CTAF) 0</b>
------------------------	--	---------------------------------



1300	2400	FANUT	MALGA	FANUT	4 NM Holding Pattern
1.2 NM to RW22	1.2 NM	3.8 NM	7 NM		
CATEGORY	A	B	C	D	
LPV DA		1003-¾	250 (300-¾)		
LNAV/VNAV DA		1050-⅞	297 (300-⅞)		
LNAV MDA	1180-1	427 (500-1)	1180-1¼	427 (500-1¼)	
CIRCLING	1180-1 412 (500-1)	1220-1 452 (500-1)	1240-1½ 472 (500-1½)	1320-2 552 (600-2)	

