

|        |         |          |      |
|--------|---------|----------|------|
| LOM UI | APP CRS | Rwy Idg  | 7098 |
| 293    | 038°    | TDZE     | 763  |
|        |         | Apt Elev | 768  |

NDB RWY 4  
QUINCY RGNL-BALDWIN FLD (UIN)

**NA**

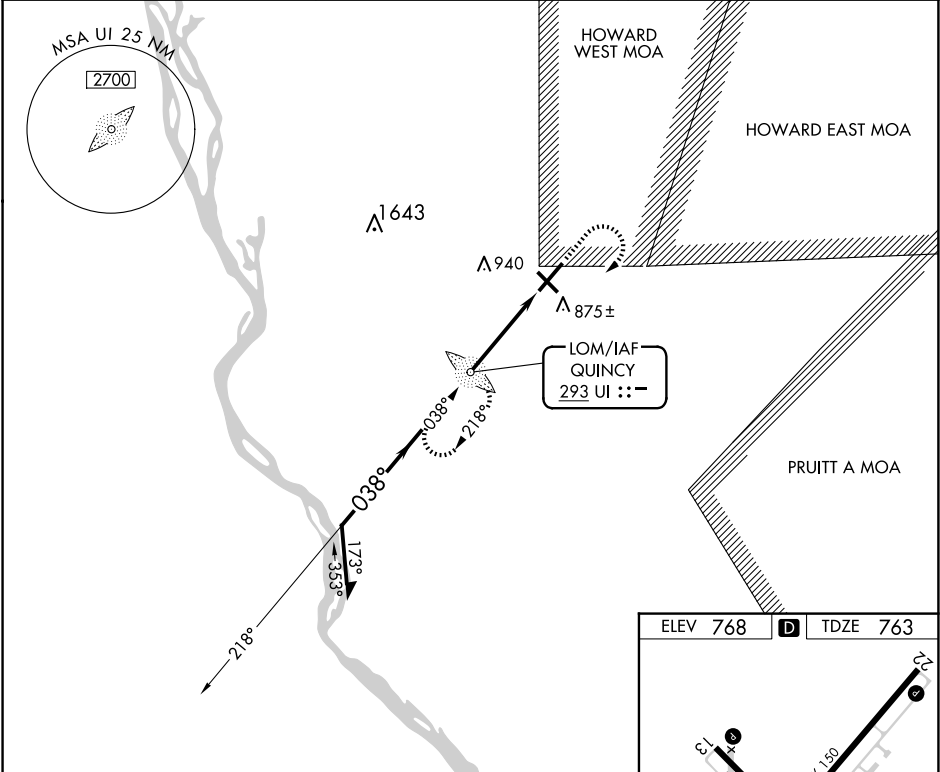
For inop ALS, increase S-04 Cat A and B visibility to 1 SM and Cat C and D visibility to 1 1/2 SM. When local altimeter setting not received, use Pittsfield altimeter setting and increase all MDAs 80 feet and S-04 visibility Cat C/D 1/4 SM. For inop ALS when local altimeter setting not received increase S-04 Cat A/B visibility to 1 SM and Cat C/D visibility to 1 3/8 SM.

**MALSR**

A5

**MISSED APPROACH:** Climb to 1800 then climbing right turn to 2300 direct UI LOM and hold.

|                 |                                       |                        |
|-----------------|---------------------------------------|------------------------|
| ASOS<br>121.425 | KANSAS CITY CENTER<br>126.225 317.775 | UNICOM<br>123.0 (CTAF) |
|-----------------|---------------------------------------|------------------------|



Remain within 10 NM

2300

218°

038°

2100

3.17°

TCH 39

3.9 NM

UI LOM 2500

1800

2300

UI

| CATEGORY | A                     | B                     | C                             | D                     |
|----------|-----------------------|-----------------------|-------------------------------|-----------------------|
| S-4      | 1180-3/4              | 417 (500-3/4)         |                               |                       |
| CIRCLING | 1180-1<br>412 (500-1) | 1220-1<br>452 (500-1) | 1240-1 1/2<br>472 (500-1 1/2) | 1320-2<br>552 (600-2) |

ELEV 768

TDZE 763