

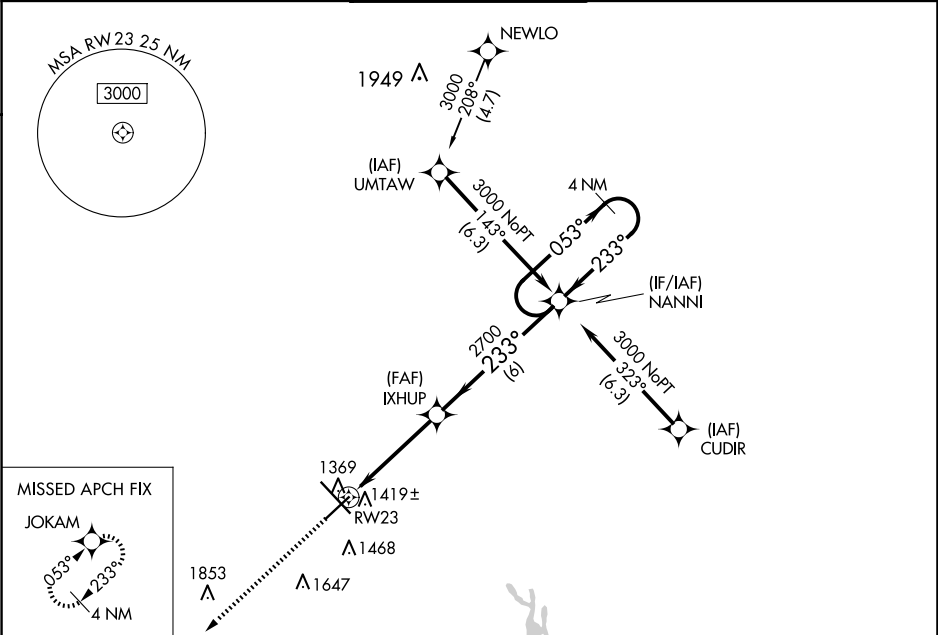
WAAS CH <b>87119</b> <b>W23A</b>	APP CRS <b>233°</b>	Rwy Idg TDZE Apt Elev	<b>6819</b> <b>1295</b> <b>1297</b>
--	------------------------	-----------------------------	---

RNAV (GPS) RWY 23

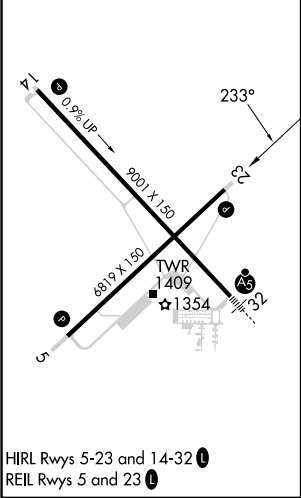
MANSFIELD LAHM RGNL (MFD)

RNP APCH.	For uncompensated Baro-VNAV systems, LNAV/VNAV NA below -20°C (-4°F) or above 54°C (130°F). Rwy 23 helicopter visibility reduction below ¾ SM NA.	MISSED APPROACH: Climb to 3000 direct JOKAM and hold.
-----------	---	--

ATIS <b>125.3</b>	CLEVELAND APP CON ★ <b>128.35 360.65</b>	MANSFIELD TOWER ★ <b>119.8 (CTAF) 291.775</b>	GND CON <b>121.8 291.775</b>	UNICOM <b>122.95</b>
----------------------	---	--	---------------------------------	-------------------------



ELEV 1297	<b>D</b>	TDZE 1295
-----------	----------	-----------



3000 JOKAM		4 NM Holding Pattern	
* LNAV only.		NANNI	
* 1.1 NM to RW23		IXHUP 2700	
RW23		2700	
1.1 NM		6 NM	
CATEGORY		A	
LPV DA		1545-7½ 250 (300-7½)	
LNAV/VNAV DA		1619-1½ 324 (400-1½)	
LNAV MDA		1680-1 385 (400-1)	
CIRCLING		1760-1 463 (500-1)	
		2000-2 703 (800-2)	
		2000-2¼ 703 (800-2¼)	