

LOM MF
372

APP CR
323°

Rwy Idg	9001
TDZE	1293
Apt Elev	1297

NDB RWY 32

MANSFIELD LAHM RGNL (MFD)

RADAR required for procedure entry.



For inoperative ALS increase Cats A/B visibility to RVR 5500 and Cats C/D visibility to $1\frac{3}{4}$ SM.

MALSR



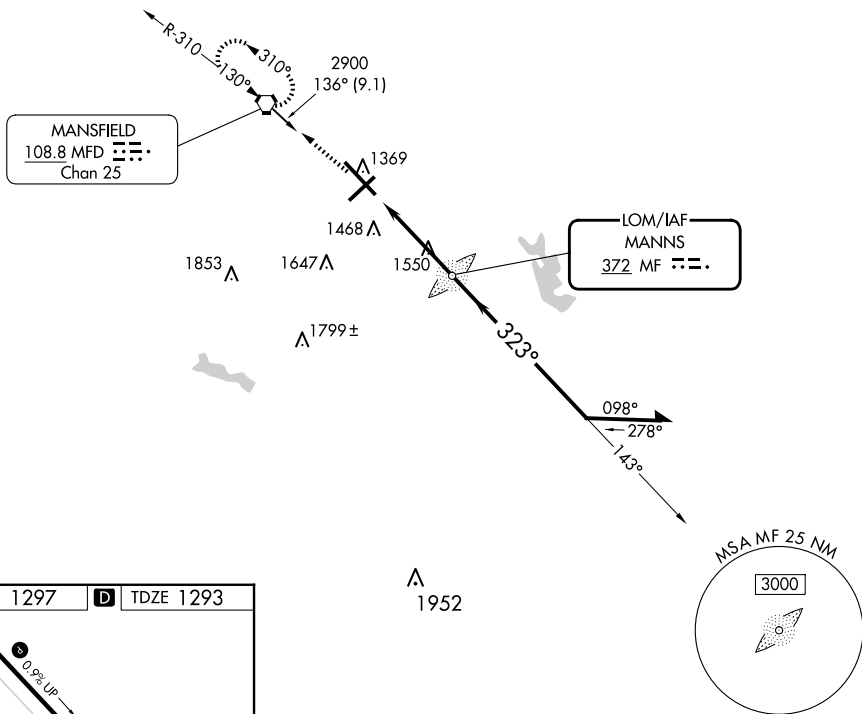
MISSED APPROACH: Climb to 2900
direct MFD VORTAC and hold.

ATIS
125.3

CLEVELAND APP CON ★
128.35 360.65

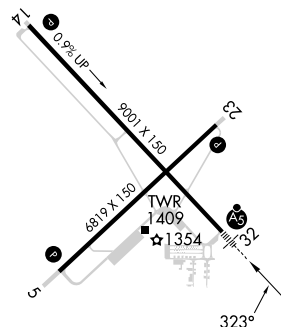
MANSFIELD TOWER ★
19.8 (CTAF) **L** 291.775

GND CON
121.8 291.775

UNICOM
122.95

ELEV 1297

D TDZE 1293



HIRL Rwys 5-23 and 14-32 **L**
REIL Rwys 5 and 23 **L**

FAF to MAP 4 NM

Knots	60	90	120	150	180
Min:Sec	4:00	2:40	2:00	1:36	1:20

2900	MFD
↑	⬡

MF LOM

Remain within 10 NM

2900

2700

143°

323°

3.16°
TCH 50

4 NM

CATEGORY	A	B	C	D
S-32	1900/40 607 (700-¾)		1900-1⅜ 607 (700-1⅜)	
CIRCLING	1900-1 603 (700-1)		2000-2 703 (800-2)	2000-2¼ 703 (800-2¼)

MANFIELD, OHIO
Amdt 11E 13SEP18

40°49'N-82°31'W

MANSFIELD LAHM RGNL (MFD)

NDB RWY 32

EC-2, 07 AUG 2025 to 04 SEP 2025