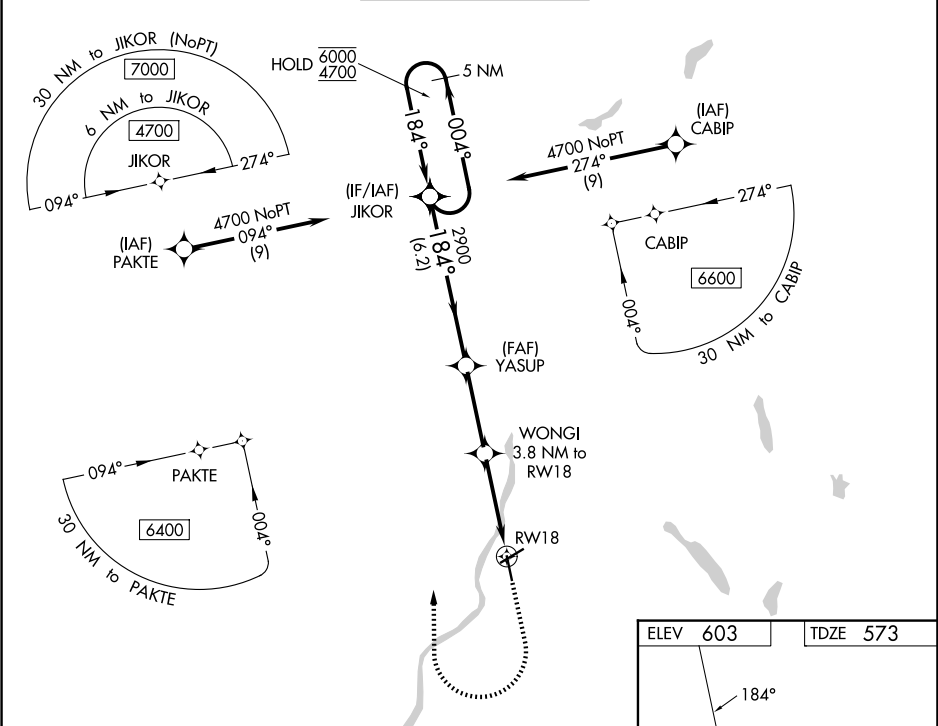


RNP APCH.		MISSED APPROACH: Climb to 2050 then climbing right turn to 4700 direct JIKOR and hold, continue climb in hold to 4700.		
Rwy 18 helicopter visibility reduction below ¾ SM NA. -19°C				
ATIS 118.65	BOSTON CENTER 134.7 269.475	LEBANON TOWER ★ 125.95 (CTAF) 0 235.775	GND CON 121.6	UNICOM 122.95



5 NM Holding Pattern		JIKOR	YASUP	WONGI	RW18
6000 4700		2900	3.8 NM to RW18		
GP 3.10° TCH 42		*1840			
6.2 NM		3.2 NM	3.8 NM		
CATEGORY	A	B	C	D	
LPV DA	933-1 360 (400-1)				
LNVA MDA	1700-1¼ 1127 (1100-1¼)	1700-1½ 1127 (1100-1½)	1700-3 1127 (1100-3)	1127 (1100-3)	
CIRCLING	1700-1¼ 1097 (1100-1¼)	1720-1½ 1117 (1200-1½)	1820-3 1217 (1300-3)	2020-3 1417 (1500-3)	

ELEV 603 TDZE 573

TWR 634

81

5496 X 100

0.005

0.005

36

MIRL Rwy 7-25 1
HIRL Rwy 18-36 1
REIL Rws 7 and 25 1
REIL Rwy 18